



# Maps for the LAFCO Directory of Local Agencies

October 2, 2014

Department of Public Works  
**Scott D. McGolpin – Director**

Presented by:

**Aleksandar Jevremović**  
Santa Barbara County Surveyor

**E. Teñell Matlovsky**  
Surveyor Supervisor



## Surveyors Office GIS Mapping Function

Maintain boundaries for governmental units: LAFCO special districts, cities, political districts, school districts, judicial districts and equalization districts, etc...

The Santa Barbara County Surveyors Office has been working with LAFCO to develop a program to make City and Special District maps more accurate, accessible, and current.

This takes the form of a directory of local agencies provided online and in hard copy.



## Mapping Program Scope

Maps and boundary activity tables for 56 LAFCO represented agencies:

- 48 Special Districts

Examples: Laguna Sanitary, North County Lighting, CSA 3, etc...  
(This count does not include the County Water Agency,  
or County Flood Control and Water Conservation District)

- 8 Incorporated Cities

Santa Barbara - (formed 8/9/1855),  
Lompoc - (formed 8/6/1888),  
Santa Maria - (formed 9/18/1905),  
Guadalupe - (formed 8/3/1946),  
Carpinteria - (formed 9/27/1965),  
Solvang - (formed 5/1/1985),  
Buellton - (formed 2/1/1992),  
Goleta - (formed 2/2/2002).

- There are over 2049 documented actions for the existing local agencies;  
there can be over 350 actions within a single district (e.g. Goleta Sanitary District).
- A Geographic Information System is necessary to maintain this information.



## County Surveyors Role In The Boundary Change Process

### 1. Request for Reportback

- A. Coordinates Reportback for the Public Works Department  
Part of the CEO's Office's Reportback from the County to LAFCO
- B. Receives Application Submittal and Project Initiation
- C. Makes Reportback Packet Maps for LAFCO
- D. Staff Reviews Proposals Legal Description and Map

### 2. Following Recordation of the LAFCO Decision to Approve Proposals

### 3. Makes Boundary Change Updates to Surveyor's Office GIS GeoDatabase

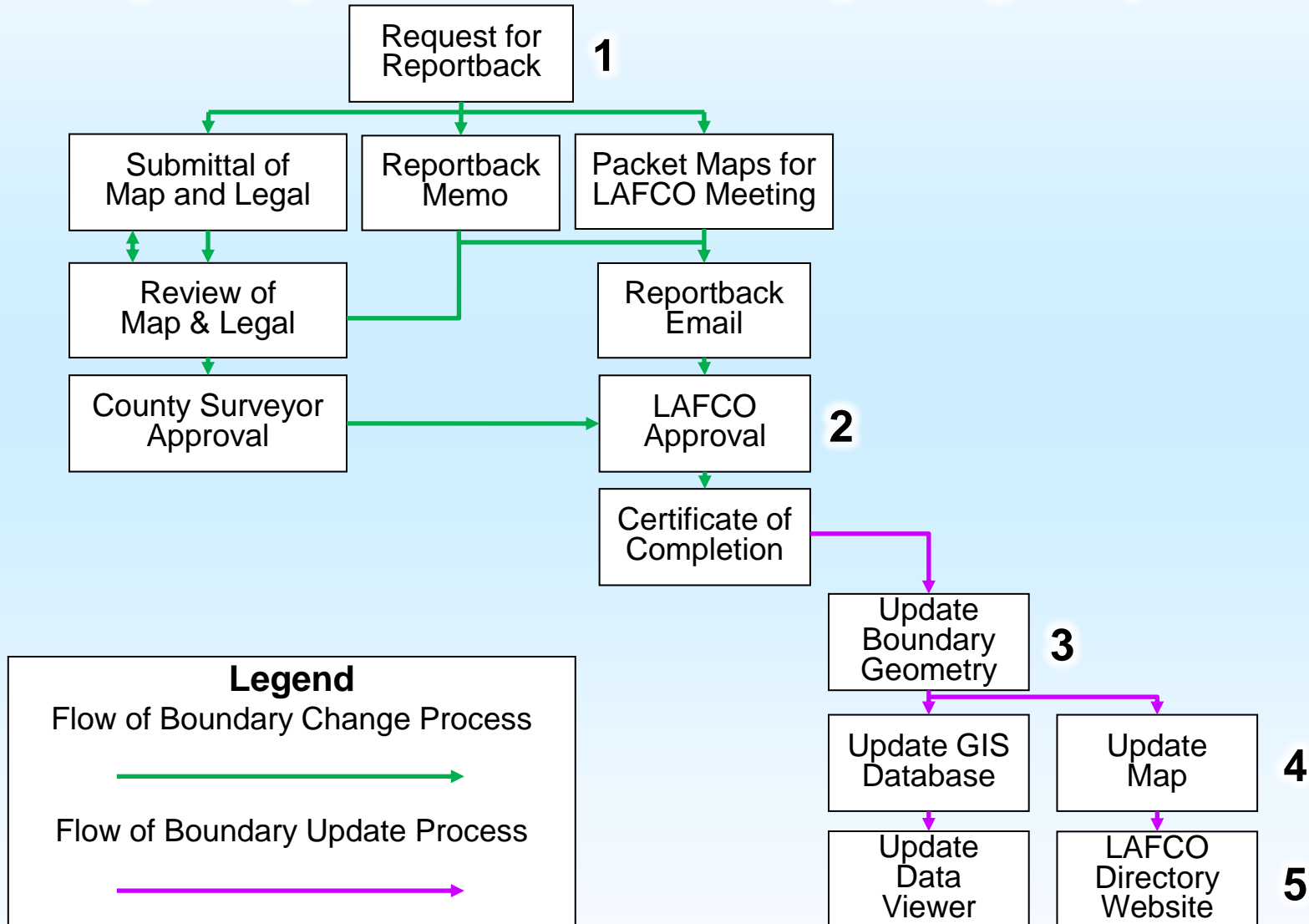
### 4. Creates and Maintains LAFCO Mapping Products

- A. Presentation Map
- B. Table of Boundary Activity

### 5. Provides Public Access to Maps Online

- A. PDF maps for download and County Interactive Map
- B. County Surveyor's Office Web Site and LAFCO Directory online

# County Surveyors Role In The Boundary Change & Update Process





# 1. Reportback

- A. Receive Request
- B. Coordinate PW Department Response
- C. Produce Packet Maps
- D. Review Legal Description/Depiction
- E. Prepare Reportback Memo
- F. Send PW Department response email  
(of surveyors review, packet maps, compiled comments, reportback memo)

**LAFCO**  
M E M O R A N D U M


---

SANTA BARBARA LOCAL AGENCY FORMATION COMMISSION  
105 East Anapamu Street • Santa Barbara CA 93101 • (805) 568-3391 • Fax (805) 647-7647

REQUEST FOR REPORTBACK

January 25, 2011

TO: Assessor  
Auditor-Controller - Property Tax Division  
County Executive  
Elections Division  
Planning & Development  
Surveyor

FROM: Bob Braitman   
Executive Officer

RE: II-1 Hourigan Annexation to the Goleta Sanitary District

Enclosed are the  a proposal questionnaire,  map and  legal description for the above-referenced proposal.

The local agencies whose service area or responsibility will be altered by this jurisdictional change are as follows:

The annexing agency only.  
 The annexing city and the Santa Barbara County Fire Protection District.  
 The local agencies listed below.

\_\_\_\_\_


\_\_\_\_\_

\_\_\_\_\_

The Assessor and Auditor  are  are not required by Section 99 of the Revenue and Taxation Code to calculate information for the negotiation for an exchange of property tax revenues for this proposal.

Additional comments:

Please review this material and report back to our office at your earliest convenience. Thank you.





# 1. Reportback

## Applicant's Surveyor Submittal – Legal Description (Exhibit A)

County Surveyors Office Staff review submittals for compliance with LAFCO/SBOE mapping standards and approves for Survey content

### EXHIBIT "A"

**VERONICA MEADOWS REORGANIZATION: ANNEXATION TO THE CITY OF SANTA BARBARA/DETACHMENT FROM THE GOLETA WATER DISTRICT/DETACHMENT FROM THE SANTA BARBARA COUNTY FIRE PROTECTION DISTRICT**

That portion of the Rancho Las Positas y La Calera in the County of Santa Barbara, State of California, being a portion of "Exception C" of "Parcel 1" of the Goleta Water District – City of Santa Barbara Detachment proceeding described in that certain Certificate of Completion relating to Resolution No. 83-642 of the Local Agency Formation Commission of the County of Santa Barbara, State of California, recorded July 19, 1983, filed as Instrument No. 83-37200 of Official Records in the Office of the Recorder of said County, more particularly described as follows:

Beginning on the City Limits Line being the southerly terminus of the 35th course of the land annexed into the City of Santa Barbara, and referred to as the "Las Positas Reorganization" as more particularly described in the Certificate of Completion executed by the Santa Barbara County Local Agency Formation Commission, LAFCO Resolution No. 06-6, a copy of which was recorded on April 7, 2008 filed as Instrument No. 2008-0019858 of Official Records, said point being on the City Limits Line and 3.59 feet westerly of the easterly terminus of the 28th course of the Braemar Annexation to the City of Santa Barbara as described in Section 1 of Ordinance No. 2566 adopted August 30, 1956 by the City Council of Santa Barbara, and said point being an angle point on the east line of that certain tract of land shown on a map titled "Portion of Rancho Las Positas y Calera," recorded on September 2, 1972, filed in Book 86, at Pages 61 and 62 of Record of Surveys in the Office of the Recorder of said County;

Thence, 1st, along said City Limits Line as defined in Ordinance 2566 and along the northerly line of the Braemar Park Subdivision recorded in Book 15 of Maps at Pages 398 through 402, Santa Barbara County Records, South 83°46'00" West, 304.30 feet to the west line of the 57.95 acre parcel of land shown on that Record of Survey filed in Book 86 of Maps at Pages 61-62, Santa Barbara County Records;

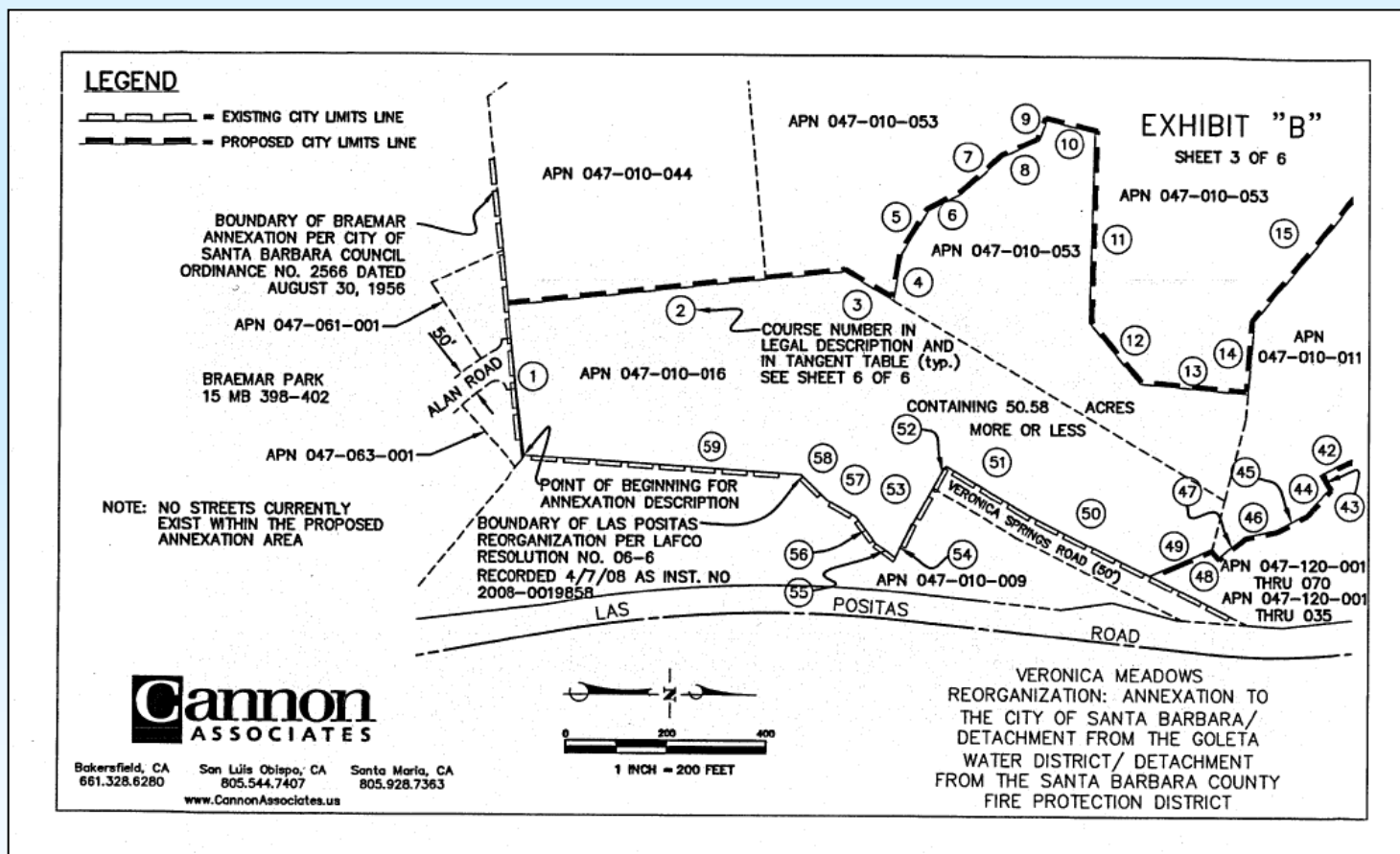
Thence 2nd., leaving said City Limits Line and northerly line of Braemar Park along the westerly line of said 57.95 acre parcel of land North 05°56'45" West, 674.89 feet;

Thence, 3rd, North 30°33'20" East, 112.6 feet more or less to a point in said westerly line which lies South 30°33'20" West 765.83 feet from the intersection of said westerly line with the Southerly line of the tract of land described in the deed to Josephine M. Barnhill recorded December 23, 1959 as Instrument No. 43231 in Book 1699 at Page 294 of Official Records;



# 1. Reportback

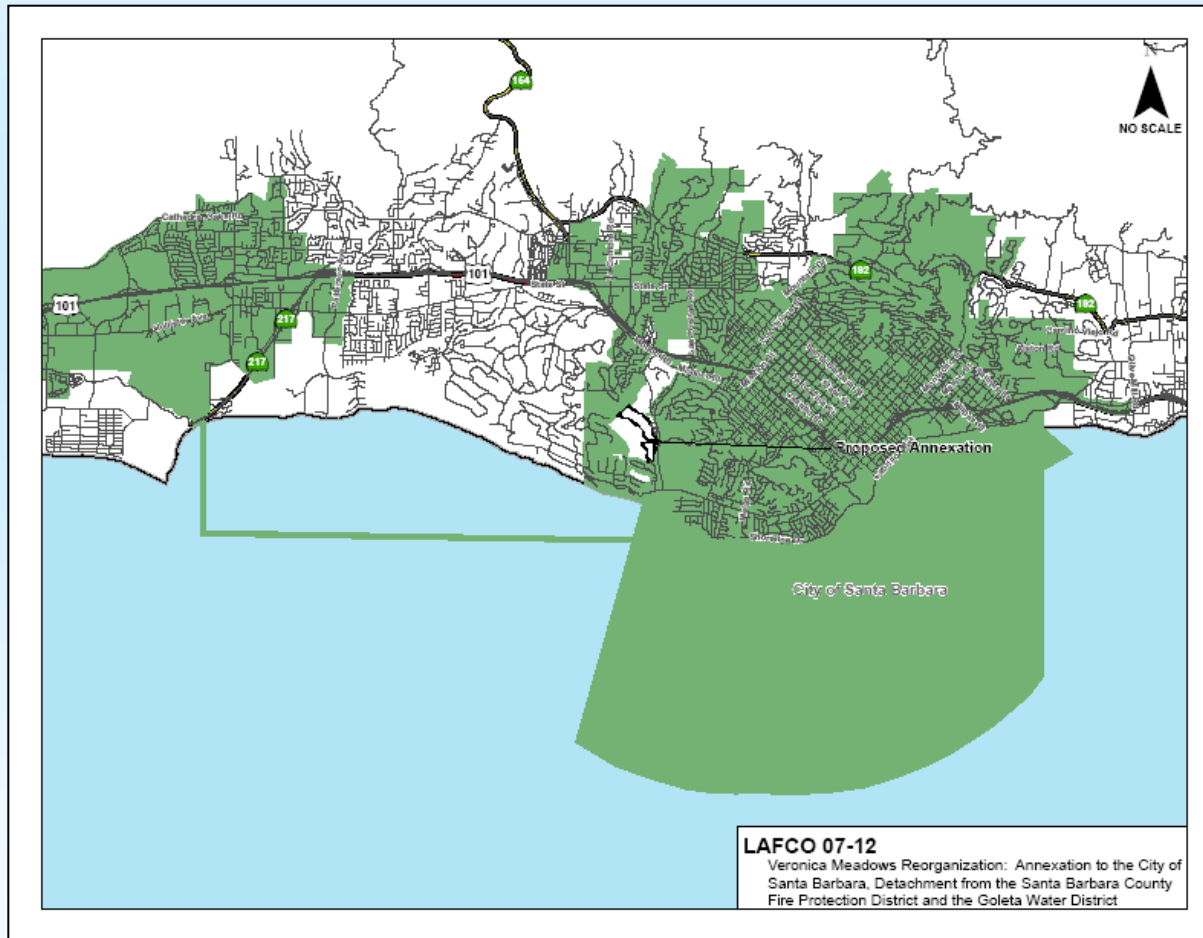
## Applicant's Surveyor Submittal – Legal Depiction (Exhibit B)





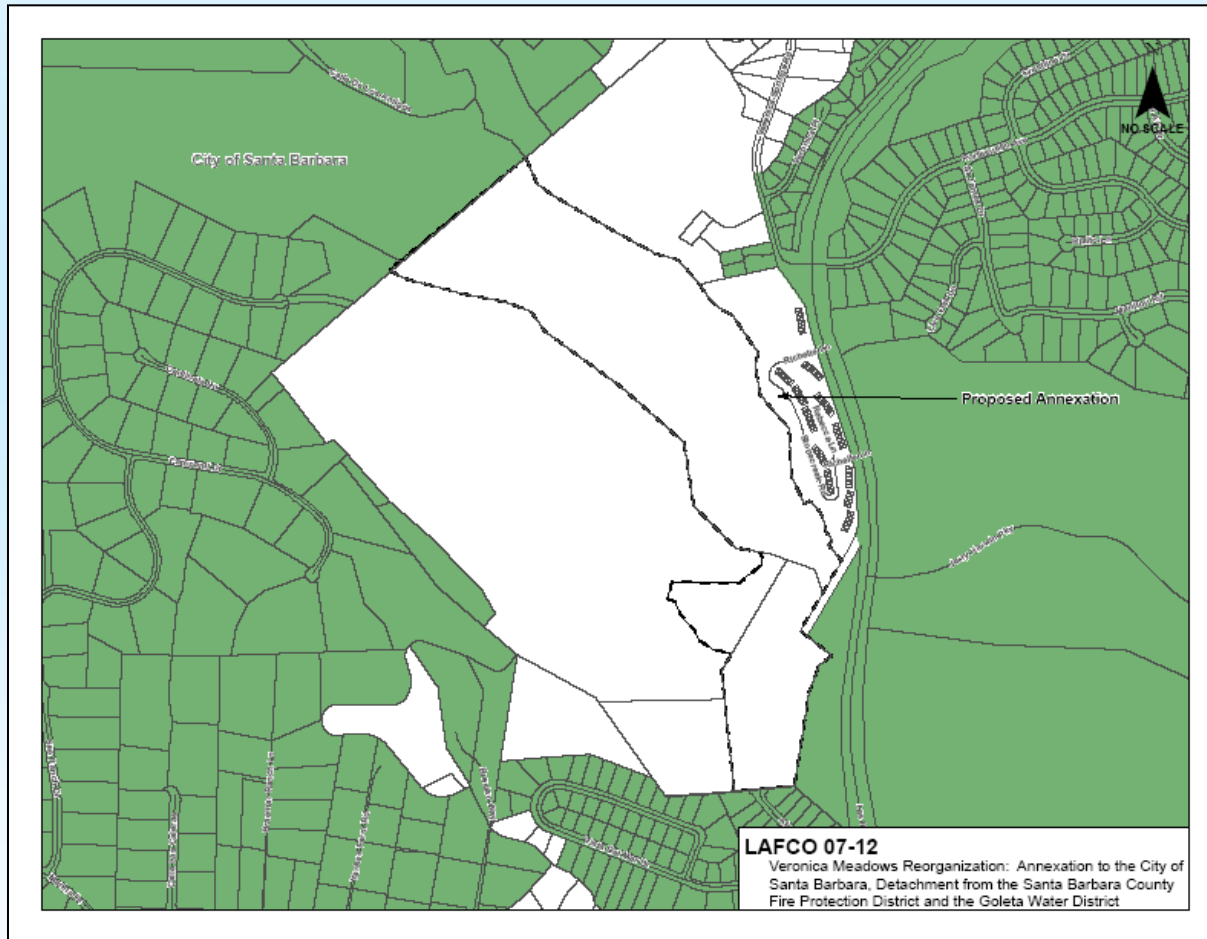
# 1. Reportback

**County Surveyor's Staff Create Packet Maps for LAFCO Meeting**  
(Overview Map – Is produced from compiled GIS data)




# 1. Reportback

**County Surveyor's Staff Create Packet Maps for LAFCO Meeting**  
(Detail Map – The proposal area is created as a pending polygon in GIS)





## 2. LAFCO Approval Records as a Certificate of Completion

  
 2009-0042221

Recording Requested By: <b>LAFCO</b> Santa Barbara Local Agency Formation Commission  Return to: <b>LAFCO</b> 105 East Anapamu Street Santa Barbara CA 93101 805/568-3391 FAX 805/647-7647 <i>No Fee Per Government Code § 6103</i>	<table border="0"> <tr> <td style="border-right: 1px solid black; padding-right: 5px;">Recorded</td> <td style="padding-left: 5px;">REC FEE</td> <td style="padding-left: 5px;">6.00</td> </tr> <tr> <td style="border-right: 1px solid black; padding-right: 5px;">Official Records</td> <td style="padding-left: 5px;">CONFIRMED COPY</td> <td style="padding-left: 5px;">6.00</td> </tr> <tr> <td style="border-right: 1px solid black; padding-right: 5px;">County of</td> <td colspan="2"></td> </tr> <tr> <td style="border-right: 1px solid black; padding-right: 5px;">Santa Barbara</td> <td colspan="2"></td> </tr> <tr> <td style="border-right: 1px solid black; padding-right: 5px;">Joseph E. Holland</td> <td colspan="2"></td> </tr> <tr> <td style="border-right: 1px solid black; padding-right: 5px;">11:11AM 14-Jul-2009</td> <td style="padding-left: 5px;">Page</td> <td style="padding-left: 5px;">1 of 20</td> </tr> </table>	Recorded	REC FEE	6.00	Official Records	CONFIRMED COPY	6.00	County of			Santa Barbara			Joseph E. Holland			11:11AM 14-Jul-2009	Page	1 of 20
Recorded	REC FEE	6.00																	
Official Records	CONFIRMED COPY	6.00																	
County of																			
Santa Barbara																			
Joseph E. Holland																			
11:11AM 14-Jul-2009	Page	1 of 20																	


20

**CERTIFICATE OF COMPLETION**

As Executive Officer of the Santa Barbara Local Agency Formation Commission, I hereby certify that the attached documents are complete and in accordance with the boundaries, modifications and conditions specified by the Commission in its Resolution No. 07-12 approving this action.

1. The kind of change of organization or reorganization and the short-form designation of the proceeding is:  
LAFCO 07-12 - Veronica Meadows Reorganization: Annexation to the City of Santa Barbara/ Detachment from the Santa Barbara County Fire Protection District/ Detachment from the Goleta Water District
2. The entire affected agency or agencies are located in Santa Barbara County.
3. The territory is uninhabited, all landowners have given written consent, all affected agencies that will gain territory as a result of the change of organization have consented and the conducting authority proceedings have been waived.
4. The Local Agency Formation Commission's resolution of approval, which was adopted on July 3, 2008 is made a part of this certificate by reference and sets forth the description of the boundaries of the proposal and any terms and conditions that apply.

BOB BRAITMAN  
Executive Officer

 \_\_\_\_\_ Date: 7-13-09

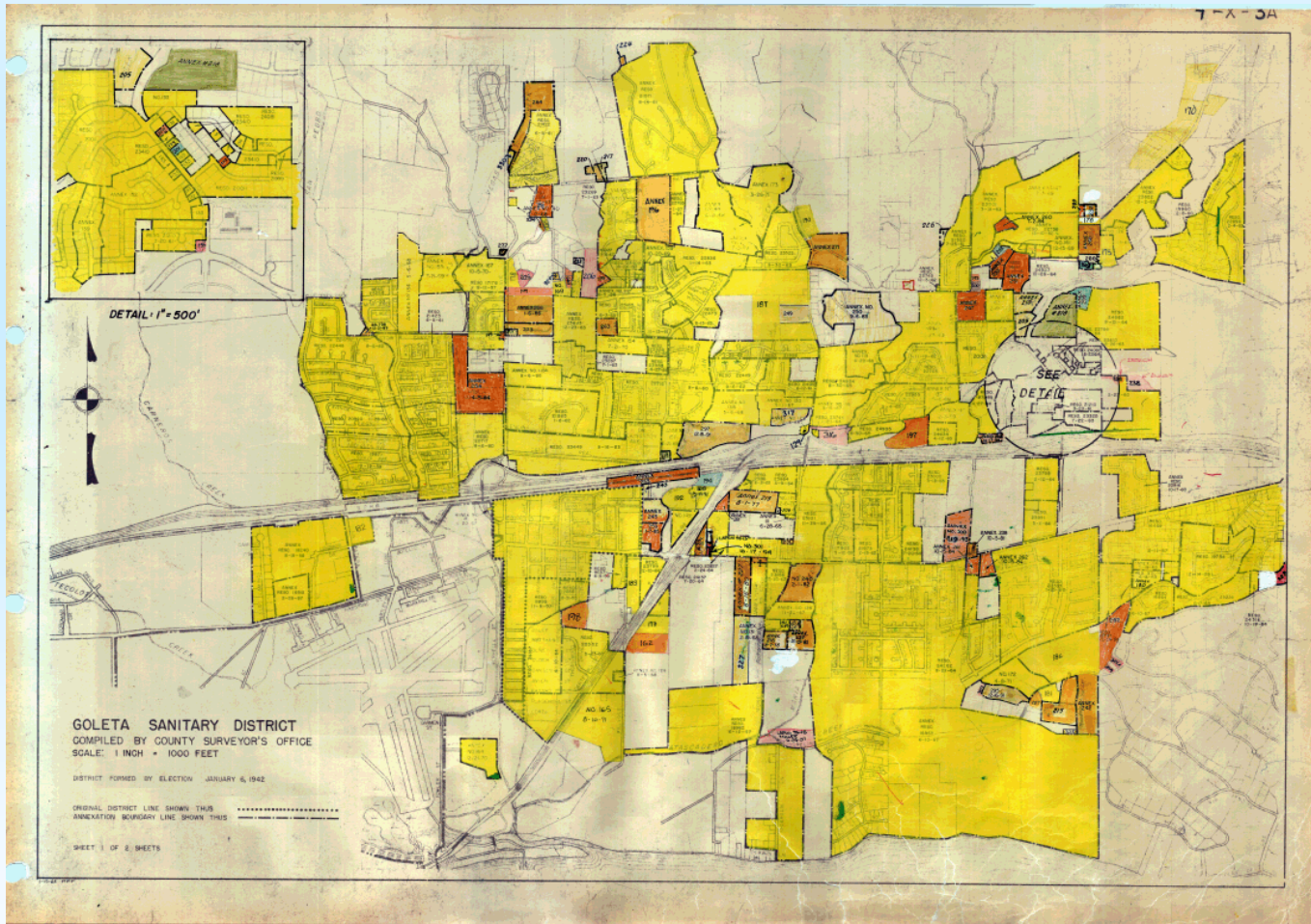
### Certificate of Completion for LAFCO approved projects

§57203. ...After recordation of the certificate of completion by the executive officer, the recorder shall file with the county surveyor a copy of the boundary description included in the certificate of completion as provided by subdivision (c) of §57201.

### 3. Boundary Updates

#### Previous Mapping Efforts:

Older maps were not distributed and were time-consuming to maintain







## 3. Boundary Updates

### Current Mapping Efforts:

#### Geographic Information Systems (GIS) Resources

- Interactive spatial index of boundary actions (polygons).
- Database of tables for boundary action information.
- Scans of boundary action documents are linked to the indexing polygons.
- Hardcopy archives of historic boundary actions are retained on file.

#### Quality Control

- Review of selected actions to make sure they are properly depicted by their index polygon.
- Review of selected boundary actions in the database.
- Reregister mapped boundary action polygons geometry to Assessors adjusted GIS parcels geometry as necessary.

#### Cartography

- A more refined cartographic style. Clear labeling.
- Distinct symbology for the sphere-of-influence.

#### Public Records Are More Accessible

- Boundary information is indexed and available to the public

### 3. Boundary Updates

The polygon and related information is added to the Geodatabase of Boundary Actions used for map production

The screenshot shows the ArcMap interface with a map of parcel boundaries. A parcel with ID 118 is highlighted. The 'Identify' window is open, showing the following metadata:

Field	Value
OBJECTID	575
SHAPE	Polygon
Acreage	50.4128
Title	Veronica Meadows Reorganization
LAFCO_Res	2007-12
Notes	<null>
Type	Annexation
InternalNo	118
Recorded	7/14/2009
Hyperlink	G:\SURVEY\GIS\DATA\Cities\Santa_Barbara\LG...
ID	SBCL118
County_Res	<null>
City_Res	<null>
City_Ord	<null>
LAFCO_No	2007-12
Instrument	2009-0042221
Effective	7/14/2009
Work_Order	<null>
Label	118
LAFCO_Date	<null>
Source_Originator	1
Data_Security	Unclassified
FCode	City
State_Name	California
Place_FIPSCode	Santa Barbara County
Place_Name	City of Santa Barbara
GNIS_ID	1661401
City_Date	<null>
Affected_Agencies	Goleta Water, County Fire



### 3. Boundary Updates

#### County Surveyor's Staff makes updates to agency boundaries

#### What are the Challenges?

- Documentation for actions before LAFCO existed is not always complete, especially for older actions.
- Some actions do not have recording information, so it is unknown if they are recorded.
- Inaccuracies of Assessors Parcel polygon GIS geometry
- The sphere-of-influence historically was not always clearly depicted
- Sphere-of-influence resolutions are not identified by a unique LAFCO number
- Sphere-of-influence definitions and change actions are not recorded
- Recorded documents are available to the public only through the County Recorder's Office in person, or through a subscription, but not online.





## 4. LAFCO Mapping Products

### A. Presentation Map – page 1

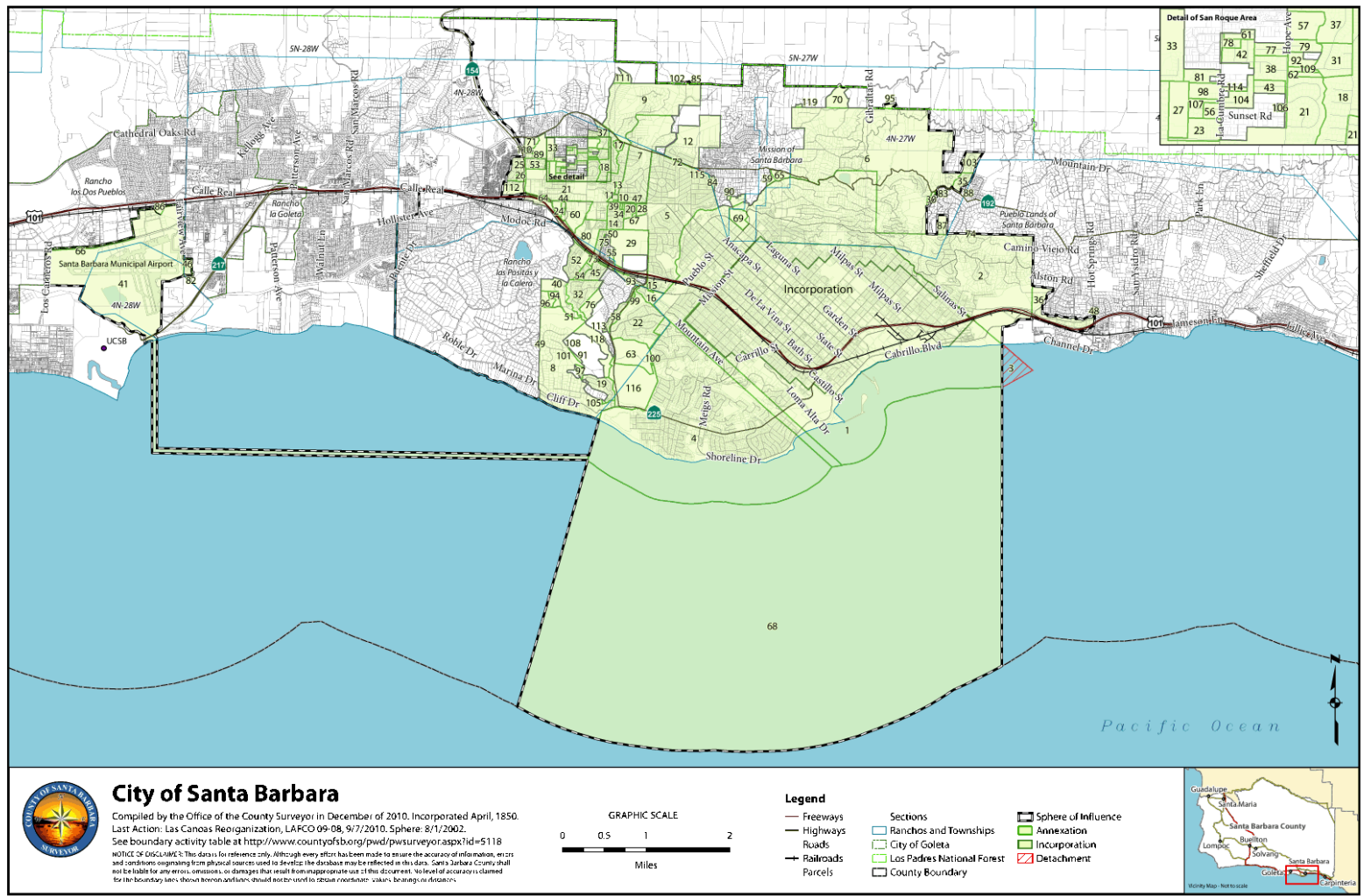
- Numbered indexing labels for approved actions
- Clearly depicts formation/Incorporation, annexations, detachments
- Sphere of Influence clearly depicted.
- Sphere of influence approval date stated in title block
- First and last approved action information stated in the title block

### B. Table of Boundary Activity Information – page 2

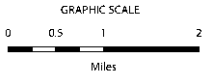
- A numbered table of indexing information about actions that corresponds to the map

# 4. LAFCO Mapping Products

## A. Presentation Map - Overview



**City of Santa Barbara**  
 Compiled by the Office of the County Surveyor in December of 2010. Incorporated April, 1850.  
 Last Action: Las Canoas Reorganization, LAFCO 09-08, 9/7/2010. Sphere: 8/1/2002.  
 See boundary activity table at <http://www.countyofsb.org/pwd/pwsurveyor.aspx?id=5118>  
 NOTICE OF DISCLAIMER: This data is for reference only. Although every effort has been made to ensure the accuracy of information, errors and omissions originating from physical sources used to develop the database may be reflected in this data. Santa Barbara County shall not be liable for any errors, omissions, or damages that result from inappropriate use of this document. No level of accuracy is claimed for the boundary lines shown herein and users should not use to locate coordinates, obtain bearings or distances.



- Legend**
- Freeways
  - Highways
  - Roads
  - Railroads
  - Parcels
  - Sections
  - Ranchos and Townships
  - City of Goleta
  - Los Padres National Forest
  - County Boundary
  - ▭ Sphere of Influence
  - ▭ Annexation
  - ▭ Incorporation
  - ▭ Detachment





# 4. LAFCO Mapping Products

## B. Table of Boundary Activity Information

InternalNo	Title	Type	Effective	City Ord	City Res	City Date	County Res	LAFCO Res	LAFCO No	LAFCO Date	Instrument	Recorded
80	Bueneman, Cavaletto & Transportation Corridor Ann*	Annexation	12/10/1973	3606	7670			1973-333	1973-AC-05			
81	Aiches Property Annexation	Annexation	10/15/1974	3691		10/15/1974						
82	Airport Easterly Clear Zone Annexation	Annexation	5/27/1975	3772		5/27/1975						
83	Eucalyptus Knolls #2 (Williams Property)	Annexation	3/15/1979	1979-016				1978-511	1978-AC-02		1978-0011541	3/15/1979
84	PM 12,700	Annexation	10/11/1979		1979-78,79	10/11/1979		1979-520	1978-AC-04		1979-0047689	
85	Giordani Property	Annexation	5/22/1980								1980-0042163	5/22/1980
86	Airport Property	Annexation	10/16/1980								1980-0042162	10/16/1980
87	Thompson Property (Via Alicia)	Annexation	10/16/1980		1980-055	10/16/1980		1997-481	1977-AC-03		1980-0042161	
88	M. Edwards Property (APN 13-123-09)	Annexation	7/22/1982	1980-576		11/3/1981		1981-594	1979-AC-07		1982-0030245	7/22/1982
89	Reino Land Company Inc. Property Annexation	Annexation	8/16/1982								1982-0034183	8/16/1982
90	Hill Property	Annexation	11/23/1982								1982-0053336	11/23/1982
91	Portion of APN 47-010-43 (Fard & Cambell Property)	Annexation	10/23/1983								1983-0057795	10/23/1983
92	Tatjes Property	Annexation	9/4/1984								1984-0048035	9/4/1984
93	Kirkhart & Ozolins Property (Modoc Road Condos)	Annexation	11/1/1984		1984-164	11/1/1984		1984-663	1983-AC-03	10/23/1984	1984-0059471	
94	Valle Verde Property	Annexation	12/21/1984		1984-184	12/21/1984		1984-681	1984-AC-2	11/8/1984	1984-0067876	
95	Sanchez Property Annexation	Annexation	1/11/1985	1984-191				1984-671	1994-14		1985-0001805	1/11/1985
96	Koelsch/Schwaiger & Rutherford Property Reorg	Annexation	5/20/1986		1986-104	5/20/1986		1985-704	1985-AC-5		1986-0038606	
97	Nichols Property Reorganization	Annexation	6/8/1987								1987-0042369	6/8/1987
98	Feazelle Annexation	Annexation	7/13/1987		1986-165	7/13/1987		1986-732	1986-AC-03		1987-0052422	
99	APN 49-150-47 Reorganization	Annexation	1/11/1988								1988-0001665	1/11/1988
100	Elbek (Jesuit Property) Annexation	Annexation	1/26/1988								1988-0004999	1/26/1988
101	Markel Reorganization	Annexation	4/5/1988								1988-0022828	4/5/1988
102	Giordani Detachment	Detachment	12/10/1993		1993-124	12/10/1993		1992-842	1991-DC-1		1993-0098471	
103	Westmont Reorganization	Annexation	8/28/1995	1995-014		1/17/1995		1994-014	1994-14		1995-0048109	8/28/1995
104	Towbes Reorganization	Annexation	6/11/1996								1996-0035858	6/11/1996
105	Morgan Reorganization	Annexation	2/4/1997								1997-0006130	2/4/1997
106	Cantor Reorg. Part 1	Annexation	9/23/1997					1997-07	1997-07	1/1/1997	1977-0056661	9/23/1997
107	Carey Reorganization	Annexation	12/8/1998								1998-0095550	12/8/1998
108	Compton Reorganization	Annexation	12/24/1998								1998-0100683	12/24/1998
109	Investec Reorganization	Annexation	7/19/2000					2000-10	2000-10	7/18/2000	2000-0044014	7/19/2000
110	Cantor Reorg. Part 2	Annexation	7/25/2000					1997-07	1997-07	1/1/1997	2000-0044976	7/25/2000
111	Northridge Reorganization	Annexation	1/11/2001					2000-24	2000-24	12/18/2000	2001-0002894	1/11/2001
112	St. Vincent's Reorganization	Annexation	10/24/2002					2002-09	2002-09		2002-0107674	10/24/2002
113	Kennedy Reorganization	Annexation	10/21/2003					2003-08	2003-08		2003-0145552	10/21/2003
114	Hart Reorg.	Annexation	8/16/2005					2004-10	2004-10		2005-0078552	8/16/2005
115	Lengsfelder Reorganization	Detachment	5/17/2006					2006-03	2006-03	4/6/2006	2006-0039991	5/17/2006
116	Las Positas Reorganization	Annexation	4/7/2008					2006-06	2006-06		2008-0019858	4/7/2008
117	Rivera Trust Out-of-Agency Service Agreement	OOASA	7/2/2009					2009-03	2009-03		n/a	7/2/2009
118	Veronica Meadows Reorganization	Annexation	7/14/2009					2007-12	2007-12		2009-0042221	7/14/2009
119	Las Canoas Reorganization	Annexation	9/7/2010					2009-08	2009-08	9/7/2010	2010-0048697	9/7/2010
	City of Santa Barbara Sphere of Influence	SOI	7/2/2009			7/2/2009				7/2/2009		



## LAFCO Mapping Program Status

### Boundary Actions

65% of hardcopy boundary actions have been scanned

85% of boundary actions are spatially indexed with an individual polygon.

### Sphere of Influence Resolutions

70% of Sphere-of-Influence resolutions have been scanned (need ~97 documents)

75% of Sphere-of-Influence resolutions are spatially indexed with an individual polygon

### Conformance with the 2010 LAFCO Standards

100% of Cities have up to date maps and tables

90% of Special Districts have updated maps and tables



# 5. Public Access to Online Maps and Spatial Data

## Presentation Maps and Boundary Activity Tables

<http://www.sblafco.org/>

<http://www.countyofsb.org/pwd/surveyor>

LAFCO ABOUT LAFCO WORKING WITH US MEETINGS

Searching for a particular item or subject? Use this form to search the site and the LAFCO document library:

 SEARCH

### Cities and Districts in Santa Barbara County

#### TABLE OF CONTENTS

- PREFACE
- INTRODUCTION
- COUNTY OF SANTA BARBARA
- CITIES
  - City of Buellton
  - City of Carpinteria
  - City of Goleta
  - City of Guadalupe
  - City of Lompoc
  - City of Santa Barbara
  - City of Santa Maria
  - City of Solvang
- AIRPORT DISTRICTS
  - Santa Maria Public Airport District
- CEMETERY DISTRICTS
  - Carpinteria Cemetery District
  - Goleta Cemetery District
  - Guadalupe Cemetery District
  - Lompoc Cemetery District
  - Los Alamos Cemetery District
  - Oak Hill Cemetery District
  - Santa Maria Cemetery District
- COMMUNITY SERVICES DISTRICTS
  - Casmalia Community Services District
  - Cuyama Community Services District
  - Los Alamos Community Services District
  - Mission Hills Community Services District
  - Santa Rita Hills Community Services District
  - Santa Ynez Community Services District
  - Vandenberg Village Community Services District

County of Santa Barbara  
**Public Works**

Living | Working | Business | Visiting | Emergencies | Government

Home > Public Works Home > Surveyor Division

**Presentation Maps**

Special Districts - LAFCO | [Incorporated Cities](#) | [Political Districts](#) | [Other Maps](#) | [School Districts](#)

[Special Districts Lookup System](#)

**Special Districts - LAFCO**

These maps are created from legal descriptions on file in the Santa Barbara County Surveyor's Office. The following files are in [Adobe Reader](#) (PDF) format. Maps created after 2009 have a boundary activity table on the second page of the PDF. The Local Agency Formation Commission (LAFCO) also works on jurisdictional changes of cities.

Cemetery Districts	Date
Carpinteria Cemetery District	1/4/2012
Goleta Cemetery District	8/6/2010
Guadalupe Cemetery District	10/27/2010
Lompoc Cemetery District	8/6/2010
Los Alamos Cemetery District	8/6/2010
Oak Hill Cemetery District	10/27/2010
Santa Maria Cemetery District	8/9/2010

Community Services Districts	Date
Casmalia Community Services District	10/12/2010
Cuyama Community Services District	12/6/2010
Los Alamos Community Services District	10/12/2010
Mission Hills Community Services District	7/23/2014
Santa Rita Hills Community Services District	10/12/2010
Santa Ynez Community Services District	1/30/2012
Vandenberg Village Community Services District	2/1/2012

County Service Areas	Date
CSA 3 - Goleta Valley - Multipurpose	11/30/2010
CSA 4 - North Lompoc - Open Space	2/13/2012
CSA 5 - Orcutt - Parks and Open Space	1/26/2012
CSA 11 - Carpinteria Valley - Street Lighting	11/30/2010
CSA 12 - Mission Canyon - Sanitation	4/28/2014
CSA 31 - Isla Vista - Multipurpose	11/30/2010
CSA 32 - Unincorporated Area - Law Enforcement	9/2007

# 5. Public Access to Online Maps and Spatial Data

## Web based GIS Interactive Map – Under Development

<http://www.countyofsb.org/pwd/surveyor>

County of Santa Barbara  
**Public Works**

Living | Working | Business | Visiting | Emergencies | Government

Home > Public Works Home > Surveyor Division

**Downloads**

### DISCLAIMER

The Santa Barbara County Surveyor makes no representations, express or implied, as to the accuracy of the information, maps, or data contained herein. This spatial index is for informational purposes and its geometry data has not been prepared for legal, engineering, or surveying purposes. This spatial index is provided with the understanding that it is not guaranteed to be correct or complete and conclusions drawn from such information are the responsibility of the user. The Santa Barbara County records, drawings, and other documents indexed have been gathered over many decades, using differing standards for quality control, documentation, and verification. All of the data provided represents current information in a readily available format. This spatial index is for reference only. Although every effort has been made to ensure the accuracy of information, errors and conditions originating from physical sources used to develop the database may be reflected in this spatial index. Santa Barbara County shall not be liable for any errors, omissions, or damages that result from inappropriate use of this spatial index. No level of accuracy is claimed for the spatial index lines shown hereon and lines should not be used to obtain coordinate values, bearings or distances.

Notification of any errors is appreciated. If misleading, inaccurate or otherwise inappropriate information is brought to our attention, a reasonable effort will be made to fix or remove it. Such concerns should be addressed to the Public Works GIS Analyst [Teñell Matlovsky](#).

Enter the Special Districts Lookup System - Under Development

**Accept** **Not Accept**

Map: Special Districts Lookup - Microsoft Internet Explorer provided by County of Santa Barbara

Special Districts Lookup

Layers

- Roads
- Creeks and Streams
- Jurisdictions
- Special Districts
- Other Districts and Zones
- sboAirPhoto
- Base Layer

Legend: Other\_Districts\_and\_Zones (stoppower)  
click a layer's type icon to see its legend

Special Districts Lookup

# THANK YOU

## Questions?