





LAFCO 2009-08

REVISED Part 2

Las Canoas Reorganization: Annexation to City of Santa Barbara Parcel B Calle Real ROW

Detach from Santa Barbara
County Fire Protection District
Detach from
Goleta Water District

Legend

-  Annexing Las Canoas Parcel B - Calle Real ROW
-  TRA Boundary
-  City Boundary
-  Parcel Layer

069044 TRA Number



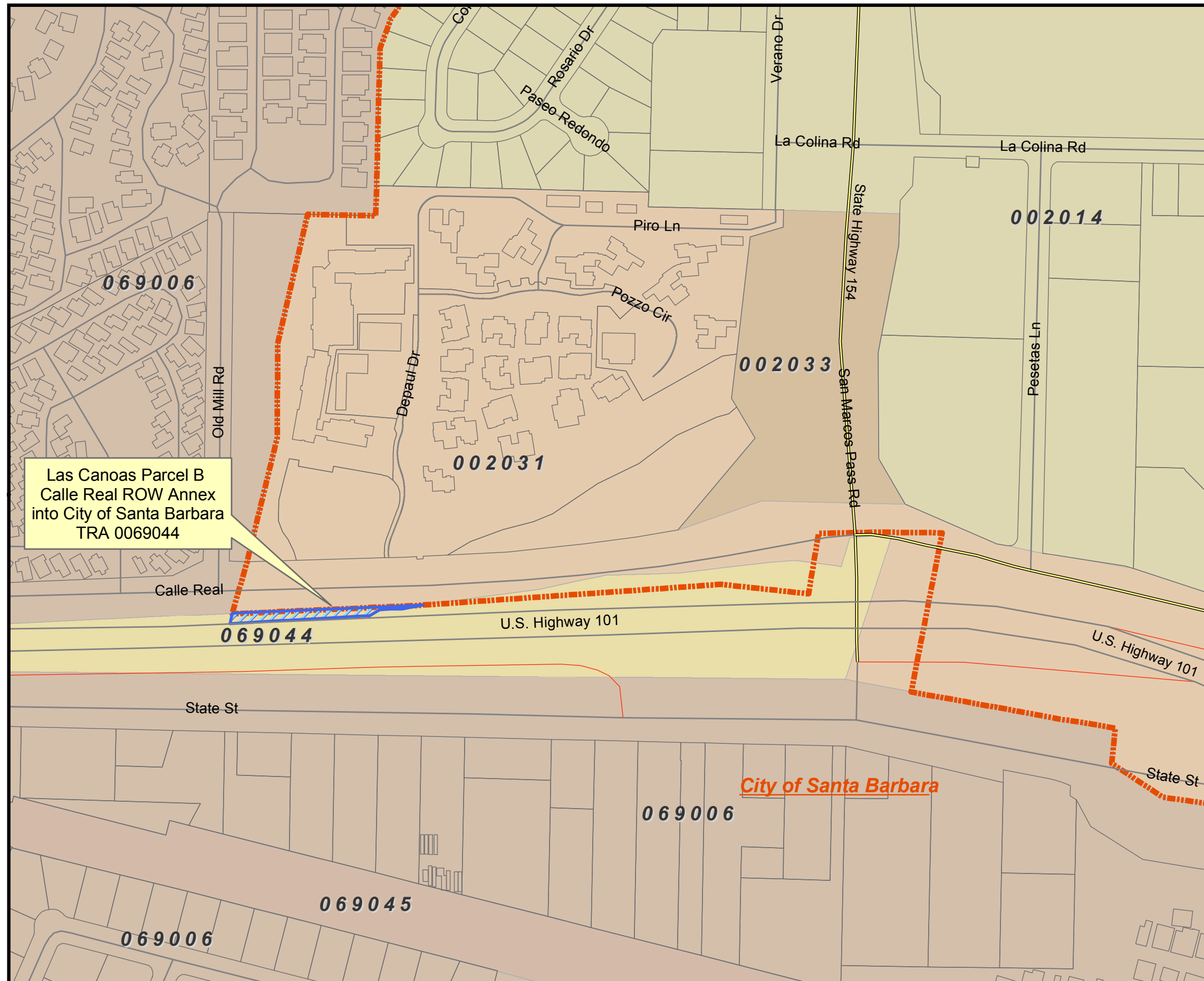
OFFICE OF THE
CLERK-RECORDER-ASSESSOR

Joseph E. Holland
Clerk-Recorder-Assessor

Source: Assessor's Cadastral Base Map
Compiled: March 16, 2010
Prepared by: E. A. Damiano
Assessor's Mapping Section
Operations Division

Note: No level of accuracy is claimed and this map should not be used to obtain coordinate values, bearings or distances.

parcels_03_08_10.shp



Las Canoas Parcel B
Calle Real ROW Annex
into City of Santa Barbara
TRA 0069044