

# **LAGUNA COUNTY SANITATION DISTRICT**

## **MUNICIPAL SERVICE REVIEW AND SPHERE OF INFLUENCE UPDATE**

Report to the  
**Santa Barbara Local Agency  
Formation Commission**

April 2012

AGENDA ITEM NO. 10

## 1. INTRODUCTION

This report regarding the Laguna County Sanitation District was prepared by the Santa Barbara Local Agency Formation Commission (“LAFCO”) in accordance with Section 56430 of the California Government Code. It responds to the requirement that LAFCO conduct a Municipal Service Review (MSR) to study the delivery of municipal services and update spheres of influence.

The MSR evaluates services provided by the District and issues regarding its sphere of influence. It describes service delivery and related issues for LAFCO to consider and presents determinations as required by law. The decision to approve or disapprove any determinations or policies rests entirely with the Commission.

Written determinations regarding the MSR and sphere of influence update are provided for the Commission’s consideration. This report is an informational document and does not substitute for discretionary decisions that can only be made by the Commission.

This Report is subject to reconsideration and revision as directed by the LAFCO staff or by the Commission during the course of its deliberations.

## 2. MUNICIPAL SERVICE REVIEW

### Description of District

The District was formed in 1958 and operates pursuant to the County Sanitation District Act (Health & Safety Code Section 4700 et seq.). It is located in northern Santa Barbara County and includes the community of Orcutt, south of the City of Santa Maria, the Tanglewood tract and undeveloped lands on either side of Highway 1.

The Board of Supervisors governs the District. The District is managed by the County Public Works Department, Resource Recovery & Waste Management Division.

The District’s boundaries and sphere of influence are coterminous. A map is included.

### District Services

The County Resource Recovery & Waste Management Division Mission Statement is:

“We protect the public health and environment of our community by efficiently managing waste products and utilities with a focus on resource conservation.”

The District provides collection, treatment and disposal of wastewater. It serves residential parcels, schools and commercial properties.

Pursuant to a 1977 reciprocal agreement with the City of Santa Maria, the District serves City customers south of the Santa Maria Airport and the City serves District customers east of the Santa Maria Airport. This agreement is scheduled to expire in December 2017.

#### Other Governmental Agencies within the District

Local agencies that overlap the District are the City of Santa Maria, County Service Area 5 (Orcutt), County Service Area 32 (Law Enforcement), North County Lighting District, Mosquito and Vector Management District of Santa Barbara County, Santa Barbara County Fire Protection District, Santa Maria Public Airport District and the Santa Maria Cemetery District.

### 3. MSR DETERMINATIONS

This report addresses the MSR factors specified in LAFCO's governing statute.

#### **Infrastructure Needs and Deficiencies**

The District's existing and planned wastewater collection and treatment infrastructure is sufficient to accommodate current and known demands. Population projections based on build-out of the Orcutt Community Plan indicates the treatment plant capacity will need to increase to 7.0 million gallons a day (MGD).

The Master Plan and Capital Improvement Plans adopted by the Board of Supervisors provide for expanding the facilities in phases to match the rate of population growth.

#### **Growth and Population Projections**

The District's Master Plan is based on the Orcutt Community Plan. Annually the County updates the Capital Improvement Plan to accommodate the population growth anticipated during the next five years.

#### **Financing Constraints and Opportunities**

The District's primary funding sources are service charges and fees and recycled water sales. Service charges have increased in recent years to finance the treatment plant upgrades to meet waste discharge requirements and Central Coast Basin Plan water quality objectives.

Based on these funding sources and continued access to low-interest State loans, it is reasonable to expect that the District will avoid long-term, unfunded financial obligations for improvements or ongoing maintenance.

#### **Cost-Avoidance Opportunities**

There are no obvious cost avoidance opportunities. The most significant costs relate to treating and discharging wastewater effluent. Joint training with other local agencies reduces costs and enhances preparations for emergencies.



**Opportunities for Rate Restructuring**

There are no obvious rate restructuring opportunities.

**Opportunities for Shared Facilities**

The sewer collection and treatment facilities are designed for the service area and do not offer opportunities for shared facilities.

**Government Structure Options**

The Board of Supervisors is the District Board of Directors. Should 70% or more of the District be annexed to the City, consideration should be given to converting to a dependent district, meaning one governed by the City Council.

**Management Efficiencies**

The District exhibits the characteristics of a well-managed agency operating efficiently and serving its residents and customers effectively.

The District is operating in accordance with its State and Federal permits. District staff holds required certifications, receive regular training and adhere to an Injury and Illness Prevention Program to improve safety.

**Local Accountability and Governance**

The district is governed by the Board of Supervisors, which is elected by districts each of which includes approximately 20% of the total County population.

**4. SPHERE OF INFLUENCE REVIEW AND UPDATE**

Description of Current Sphere of Influence

The District’s boundaries and sphere of influence are coterminous. A map is included.

Sphere of Influence Determinations

Inasmuch as no changes in the sphere of influence are proposed at this time it is not necessary for the Commission to adopt or approve any determinations.

## 5. ACKNOWLEDGEMENTS & REFERENCES

The Santa Barbara LAFCO staff prepared this Municipal Service Review. Responsibility for any errors or omissions rests with those who prepared the report.

The County Public Works Department provided the basic information and documents upon which the evaluation is based.

Mapping services were provided by the County Surveyor.

## 6. RECOMMENDATIONS

In consideration of information gathered and evaluated during the Municipal Service Review it is recommended the Commission affirm the current Sphere of Influence and that it not be expanded or revised at this time.

RESOLUTION OF THE  
SANTA BARBARA LOCAL AGENCY FORMATION COMMISSION  
MAKING WRITTEN DETERMINATIONS AND CEQA FINDINGS AND UPDATING THE  
SPHERE OF INFLUENCE OF THE LAGUNA COUNTY SANITATION DISTRICT

WHEREAS, pursuant to the Cortese/Knox/Hertzberg Local Government Reorganization Act (Government Code Section 56425 et seq.) the Commission is required to review and update, as necessary, adopted spheres of influence not less than once every five years, and

WHEREAS, Government Code Section 56430 directs the Commission in updating spheres of influence to conduct a review of municipal services not later than the time it considers an action to establish or update a sphere of influence, and

WHEREAS, the Commission has conducted a municipal service review for agencies within the Santa Maria area, including the Laguna County Sanitation District, and

WHEREAS, in the manner required by law, the Executive Officer has given notice of the public hearing by the Commission on the proposal; and

WHEREAS, the Commission has heard, discussed and considered all relevant evidence, including but not limited to, the Executive Officer report and recommendation, any environmental documents, applicable general and specific plans and all testimony, correspondence and exhibits received during the public hearing, all of which are included herein by reference.

NOW THEREFORE, IT IS RESOLVED, DETERMINED AND ORDERED as follows:

1. The project is an update of the Sphere of Influence of the Laguna County Sanitation District.
2. The Commission finds this update to be exempt from CEQA because no change in the sphere of influence is being proposed or adopted.
3. The Sphere of Influence is hereby updated and no change is made to the boundaries of the sphere as shown on the attached map.
4. This resolution is adopted on April 5, 2012 and is effective on the date signed by the Chair.

AYES:

NOES:

ABSTAINS:

ABSENT:

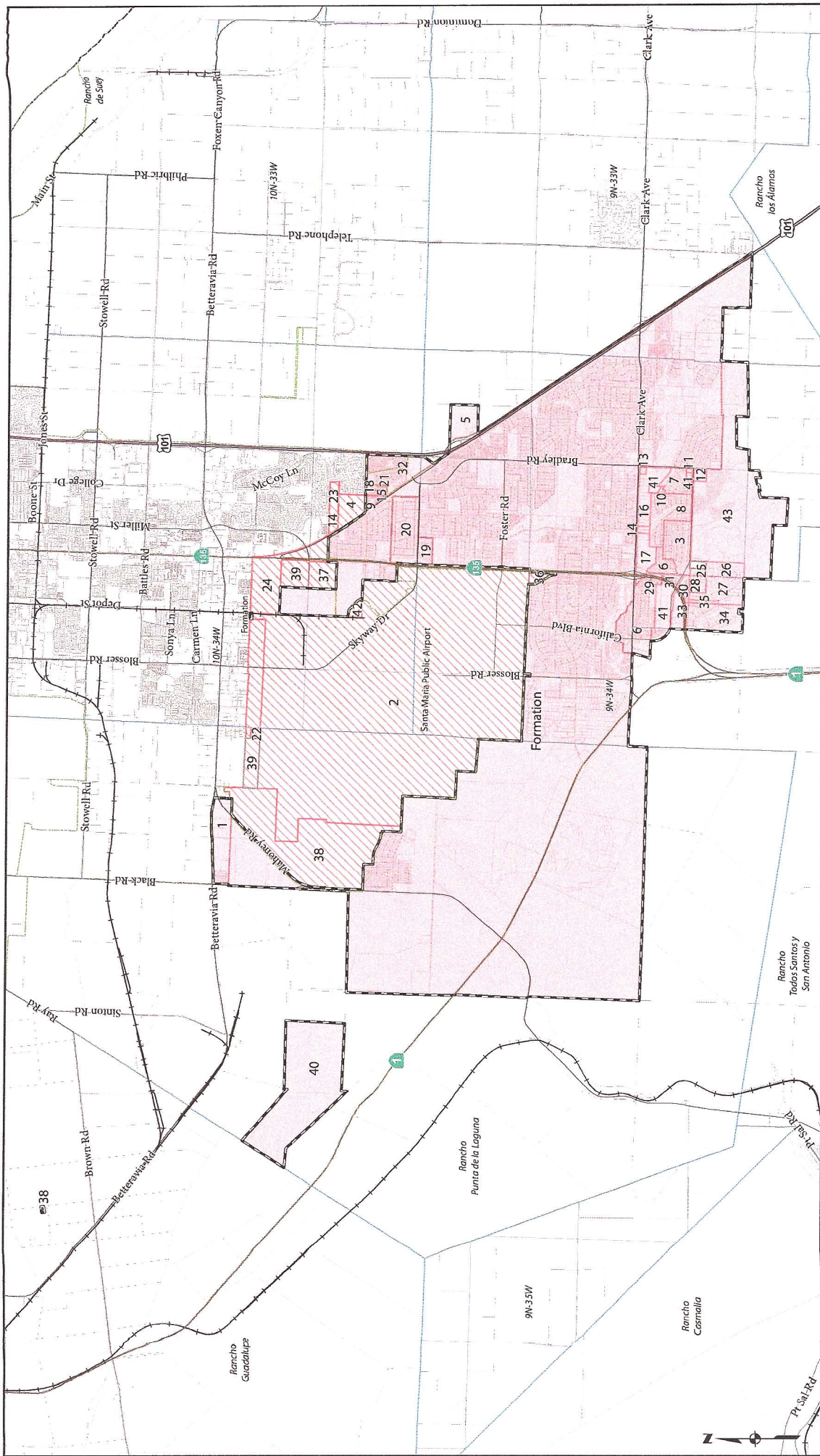
Dated: \_\_\_\_\_

\_\_\_\_\_  
Chair, Santa Barbara Local Agency Formation Commission

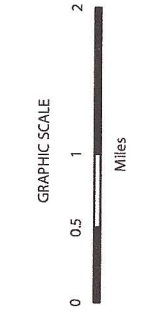
ATTEST

\_\_\_\_\_  
Mary Everett, Clerk, Santa Barbara Local Agency Formation Commission





- Legend**
- Freeways
  - Highways
  - Roads
  - Railroads
  - Parcels
  - Sections
  - Ranchos and Townships
  - County Boundary
  - City of Santa Maria
  - Sphere of Influence
  - Formation
  - Annexation
  - Detachment



**Laguna County Sanitation District**  
 Compiled by the Office of the County Surveyor in December of 2010. Formed 12/18/1961 by Board of Supervisors Resolution 21824. Last Action: Rice Ranch Reorg., LAFCO 07-04, 6/27/2007. Sphere: 1/2/2006. Boundary activity table at <http://www.countysfb.org/pwd/pwsurveyor.aspx?id=23260>

NOTICE OF DISCLAIMER: This data is for reference only. Although every effort has been made to ensure the accuracy of information, errors or omissions may occur. The County Surveyor and the County shall not be liable for any errors, omissions, or damages that result from inappropriate use of this document. No warranty is made for the boundary lines shown hereon and lines should not be used to obtain coordinate values, bearings or distances.





# Laguna County Sanitation District Boundary Activity

See map at <http://www.countyofsb.org/pwd/pwsurveyor.aspx?id=23260>

InternalNo	Title	Type	Effective	County_Res	County_DT	LAFCO_Res	LAFCO_Date	Instrument	Recorded
0	Laguna Co. Sanitary Dist. Formation	Formation	12/29/1958	18598	12/29/1958				
1	Muscara, Tract 10036	Annexation	7/20/1959	19311	7/20/1959				
2	Santa Maria Airport Exception	Detachment	9/19/1960	20740	9/19/1960				
3	Mission Highlands, Weldon	Annexation	1/23/1961	21093	1/23/1961				
4	Santa Maria Theatre, Charles G. Dorsey	Annexation	10/30/1961	21727	10/30/1961				
5	William Blackenburg, et al	Annexation	12/11/1961	21814	12/11/1961				
6	Orcutt Sanitation District	Annexation	12/18/1961	21824	12/18/1961				
6	Orcutt Sanitation District	Annexation	12/18/1961	21824	12/18/1961				
7	Dee-Kay Development, Tract 10081	Annexation	3/12/1962	22114	3/12/1962				
8	Vestoma Investment Co., T10244	Annexation	7/9/1962	22371	7/9/1962				
9	R.A. Watt, Trailer Park, Property Mgmt.	Annexation	7/30/1962	22438	7/30/1962				
10	Dee Kay Development Co, Tract 10290	Annexation	3/4/1963	22971	3/4/1963				
11	First Baptist Church	Annexation	11/18/1963	23632	11/18/1963				
12	Rice Ranch School	Annexation	2/24/1964	23835	2/24/1964				
13	Edwin T. Johnson, et al	Annexation	1/18/1965	24491	1/18/1965				
14 B	First Baptist Church	Annexation	1/25/1968			68-065	11/25/1968		
14 A	Claude C. Truex, et al	Annexation	6/28/1965	24792	6/28/1965				
15	Adam, et al Property	Annexation	6/16/1971	71-394	5/24/1971	71-239	5/17/1971	2351/902-909	6/16/1971
16	Solomon Creek No. 1	Annexation	9/22/1971	71-597	8/23/1971	71-252	8/18/1971	2365/615-623	9/22/1971
17	Solomon Creek No. 2	Annexation	9/22/1971	71-598	8/23/1971	71-253	8/18/1971	2665/624-636	9/22/1971
18	Lot Split 11888	Annexation	12/31/1973	73-799	12/10/1973	73-357	11/29/1973	2495/122-131	12/31/1973
19	Lakeview Sanitary District	Annexation	1/21/1975	74-941	12/16/1974	74-384	12/5/1974	XX49/463 OR	1/21/1975
20	Evergreen Acres Sewer Maint. Dist.	Annexation	6/16/1975	75-416	6/16/1975	75-401	5/22/1975		
21	TPM 12382	Annexation	11/11/1977	77-451	9/26/1977	77-474	8/25/1977	1977-0056585	11/11/1977
22	"A" Street Withdrawal	Detachment	7/31/1978	78-206	11/15/1978	78-491	4/27/1978	1978-0034821	7/31/1978
23	Libeau Annex. To City of Santa Maria	Detachment	6/15/1979			79-526	5/24/1979	1979-0027232	6/15/1979
24	Portions of Annexation No. 68	Detachment	5/26/1980	80-047	2/11/1980	79-552	11/29/1979	1980-0049294	5/26/1980
25	Tommy Gee Property TPM 12716	Annexation	4/14/1981	81-115	3/16/1981	81-577	2/26/1981	1981-0014900	4/14/1981
26	Jones Property TPM 12518	Annexation	4/14/1981	81-117	3/16/1981	81-579	2/26/1981	1981-0014899	4/14/1981
27	Wilks Property TPM 12519	Annexation	8/13/1981	81-114	3/16/1981	81-576	2/26/1981	1981-0033494	8/13/1981
28	Flynn Property TPM 12745	Annexation	8/13/1981	81-116	3/16/1981	81-578	2/26/1981	1981-0033495	8/13/1981
29	Molina/Flynn Property TPM 13104	Annexation	10/28/1981	81-441	10/5/1981	81-590	9/3/1981	1984-0044089	10/28/1981
30	William Eames	Annexation	11/9/1981	81-440	10/5/1981	81-440	9/3/1981	1981-0045597	11/9/1981
31	Mohawk Village	Annexation	11/24/1981	81-442	10/5/1981	81-591	9/3/1981	1981-0047781	11/24/1981
32	J.F Rowan, et al & J. Heath	Annexation	3/5/1982	81-530	11/23/1981	81-602	10/22/1981	1982-0008733	3/5/1982
33	PM 12715	Annexation	6/11/1982	82-186	5/3/1982	81-612	4/22/1982	1982-0024089	6/11/1982



InternalNo	Title	Type	Effective	County_Res	County_DT	LAFCO_Res	LAFCO_Date	Instrument	Recorded
34	Elkhorn Estates, Tract 12796	Annexation	3/13/1985	83-067	2/19/1985	85-691	2/7/1985	1985-0012465	3/13/1985
35	Marion Smith	Annexation	4/15/1985	85-142	4/8/1985	85-694	3/28/1985	1985-0018979	4/15/1985
36	Foxenwoods Annex to Santa Maria	Detachment	12/5/1990	95-271	5/23/1995	90-804	9/6/1990	1990-0077404	12/5/1990
37	Old Country Club Estates	Detachment	6/2/1995	95-271	5/23/1995	94-20		1995-0029928	6/2/1995
38	Mahoney Ranch Reorganization	Detachment	11/9/2004			03-05	3/4/2004	2004-0119171	11/9/2004
39	Robinson Reorganization	Detachment	4/14/2004			02-15	2/6/2003	2004-0036513	4/14/2004
40	Laguna Co. Sanitation Dist. Property	Annexation	7/5/2005			05-08	6/2/2005	2005-0063050	7/5/2005
41	Stonegate Reorganization	Annexation	4/5/2006			05-18	12/1/2005	2006-0026742	4/5/2006
42	Hagerman Reorganization	Detachment	7/14/2006			05-17	12/1/2005	2006-0055703	7/14/2006
43	Rice Ranch Reorganization	Annexation	6/27/2007			07-04	3/1/2007	2007-0047572	6/27/2007
	Laguna County Sanitary District SOI	Sphere-of-Influence	2/2/2006				2/2/2006		