

# L A F C O M E M O R A N D U M

---

**SANTA BARBARA LOCAL AGENCY FORMATION COMMISSION**  
105 East Anapamu Street ♦ Santa Barbara CA 93101 ♦ (805) 568-3391 ♦ Fax (805) 568-2249

---

October 5, 2017 (Agenda)

TO: Each Member of the Commission

FROM: Paul Hood **PLH**  
Executive Officer

SUBJECT: **Receive and File Report on Municipal Service Reviews/Sphere of Influence Update Schedule**

*This is an Informational Report. No Action is Necessary*

The law requires that Spheres of Influence be updated every five years. The Santa Barbara Local Agency Formation Commission (LAFCO) received a report from its staff regarding a proposed program and schedule to review and update Spheres of Influence for the cities and special districts in Santa Barbara County.

After receiving the report and discussing the update program, the Commission directed the Executive Officer to confer with local agencies regarding whether changes necessitate new Municipal Service Reviews to update their Spheres of Influence. Updates will be prepared “as necessary” if there are significant changes to the city’s general plan, funding levels, or requested sphere of influence revisions.

## City Sphere of Influence Updates

At the January 7, 2016 meeting, the Commission reaffirmed spheres of influence for the following cities:

- City of Buellton
- City of Guadalupe
- City of Lompoc
- City of Santa Barbara
- City of Santa Maria
- City of Solvang

City of Carpinteria: At the January 7, 2016 meeting, the Commission amended the sphere of influence for the City of Carpinteria to delete two areas:

Area I was part of the recently approved Linden Avenue and Casitas Pass Road interchanges and Via Real Extension Improvements project, and accompanying Local Coastal Program Amendment that created the Whitney Site Agricultural Overlay District within the City's Zoning Code. A requirement is that the City apply to LAFCO to remove the two agricultural parcels from the City sphere of influence

Area II was roughly half of the Carpinteria Cemetery Property (APN 005-430-050) is within the City's sphere of influence. The City believed that this may be a mapping error and that the entire Cemetery property most appropriately should be outside the City's sphere of influence

City of Goleta: On February 16, 2016, the City Council of Goleta voted to request that LAFCO add three areas to its sphere of influence (**Exhibit A**):

Subarea A is a centrally located pocket of land adjacent to eastern Old Town Goleta, east of Highway 217 and north of Atascadero Creek and the Coastal Zone encompassing the St. Athanasius Church complex.

Subarea D, located south of Goleta, extends from Phelps Road and the University Village Neighborhood on the north to the Devereux Slough and Pacific shoreline on the south. Most of the land near Goleta Slough is owned by UC Santa Barbara containing housing developments, although it also includes Ocean Meadows Golf Course.

Subarea E is located north of the Northwest Residential Subarea, north of Cathedral Oaks Drive and west of Glen Annie Road. The site currently consists solely of the Glen Annie Golf Course.

Goleta City staff was advised that to begin the Municipal Service Review/Sphere of Influence Update process, an application and questionnaire should be submitted to LAFCO. To date no application has been filed with LAFCO staff.

#### Special District Sphere of Influence Updates

Between February 12 and 17, 2016, staff sent out Municipal Service Review/Sphere of Influence Update letters to the following special districts:

- Carpinteria Cemetery District
- Goleta Cemetery District
- Guadalupe Cemetery District
- Lompoc Cemetery District
- Los Alamos Cemetery District
- Oak Hill Cemetery District
- Santa Maria Cemetery District

- Carpinteria Sanitary District
- Carpinteria/Summerland Fire Protection District
- Carpinteria Valley Water District
- Summerland Sanitary District
  
- Goleta Sanitary District
- Goleta Water District
- Goleta West Sanitary District
  
- Montecito Fire Protection District
- Montecito Sanitary District
- Montecito Water District

The deadline to either request that the Commission reaffirm the existing spheres of influence, or request changes, was March 18, 2016. The following special districts responded and on May 5, 2016, the Commission confirmed the existing Municipal Service Review/Sphere of Influence for the following independent special districts:

- Goleta Cemetery District
- Goleta Sanitary District (Revised Language)
- Goleta Water District
- Montecito Sanitary District
- Summerland Sanitary District

This was followed on August 5, 2016, with the Commission confirmed the existing Municipal Service Review/Sphere of Influence for the following independent special districts:

- Goleta Sanitary District
- Goleta West Sanitary District (Revised Language)
- Santa Maria Cemetery District
- Oak Hill Cemetery District
- Guadalupe Cemetery District
- Lompoc Cemetery District
- Los Alamos Cemetery District

On May 5, 2016, the Commission adopted resolutions confirming the Sphere of Influence for the Goleta Sanitary District. However, the minutes of the September 1, 2005 meeting referred to a “Supplemental Report” that was not included on the SBLAFCO website. The Supplemental Report deleted all reference to a “Common Sphere of Influence” for the Goleta Sanitary District and the Goleta West Sanitary District. The previous determination was based on a finding that the two district should be consolidated. However, this was determined to be financially infeasible based on user fees. Instead, the Commission adopted spheres of influence for both districts that include their respective district boundaries and not a “common sphere of influence.”

Based on this, the Goleta Sanitary District has submitted an amended request include Revised Language in to delete reference to a “common” sphere of influence. The Commission approved Municipal Service Review/Spheres of Influence include current district boundaries for both the Goleta Sanitary District and the Goleta West Sanitary District

Summary of Municipal Service Review/Sphere of Influence Updates

Based on the above, the following Cities Municipal Service Review/Sphere of Influence Updated or confirmed in the last year:

- City of Buellton
- City of Guadalupe
- City of Lompoc
- City of Santa Barbara
- City of Santa Maria
- City of Solvang

Independent Special Districts Municipal Service Review/Sphere of Influence Updated or confirmed in the last year:

- Goleta Sanitary District
- Goleta West Sanitary District (Revised Language)
- Santa Maria Cemetery District
- Oak Hill Cemetery District
- Guadalupe Cemetery District
- Lompoc Cemetery District
- Los Alamos Cemetery District
  
- Goleta Cemetery District
- Goleta Sanitary District (Revised Language)
- Goleta Water District
- Montecito Sanitary District
- Summerland Sanitary District
  
- Santa Maria Cemetery District
- Oak Hill Cemetery District
- Guadalupe Cemetery District
- Lompoc Cemetery District
- Los Alamos Cemetery District

In addition, two special districts, the Isla Vista Community Services District and the Cuyama Basin Water District, were formed in 2016 and allocated a sphere of influence that are coterminous with the current district boundaries.

The following Independent Special Districts were sent update letters, but did not respond:

- Carpinteria Valley Water District
- Montecito Fire Protection District
- Montecito Water District

In addition, the Carpinteria Sanitary District requested inclusion of additional agricultural areas and were advised that an application and questionnaire should be submitted to LAFCO. To date, no application has been filed with LAFCO staff.

Pending Municipal Service Reviews/Spheres of Influence Updates:

The independent special districts that have not been reviewed are as follows:

- Carpinteria Valley Water District (Did not respond to LAFCO Staff request)
- Cuyama Resource Conservation District
- Casmalia Community Services District
- Cuyama Community Services District
- Cuyama Valley Recreation and Park District
- Embarcadero Municipal Improvement District
- Goleta Water District
- Isla Vista Recreation and Park District
- Lompoc Valley Medical Center
- Los Alamos Community Services District
- Mission Hills Community Services District
- Montecito Fire Protection District (Did not respond to LAFCO Staff request)
- Montecito Water District (Did not respond to LAFCO Staff request)
- Mosquito and Vector Management District
- Santa Barbara Metropolitan Transit District
- Santa Maria Public Airport District
- Santa Maria Valley Water Conservation District
- Santa Rita Hills Community Services District (Inactive)
- Santa Ynez Community Services District
- Santa Ynez River Water Conservation District
- Santa Ynez River Water Conservation District #1
- Vandenberg Village Community Services District

In addition, there are a number of dependent special districts that require Municipal Service Review/Sphere of Influence Updates:

- Laguna County Sanitation District



- Santa Barbara County Fire Protection District
- North County Lighting District
- Mission Canyon Lighting District
- Guadalupe Lighting District
- CSA 32 Unincorporated police services
- CSA 11 (Carpinteria Valley) Lighting Service Area
- CSA 3 (Goleta Valley) Multi Service
- CSA 31(Isla Vista) Multi-Purpose
- CSA 4 (North Lompoc) Parks and Open Space
- CSA 5 (Orcutt) Parks and Open Space
- CSA 41 (Rancho Santa Rita) Road Maintenance
- CSA 12 (Mission Canyon) Sanitation Services

Conclusion:

The Commission directed the Executive Officer to confer with local agencies regarding whether service or planning changes necessitate new Municipal Service Reviews to update their Spheres of Influence. Updates are being prepared “as necessary” if there are significant changes to the city’s general plan, funding levels, or requested sphere of influence revisions. Staff has consulted all Cities and the Special Districts listed on page two of this report and will continue to work on the remaining updates in the next year.

EXHIBITS

Exhibit A      Map of Goleta’s Pending Sphere of Influence Amendment Request

Please contact the LAFCO office if you have any questions.



2015 DEC 23 PM 2:49

COUNTY OF SANTA BARBARA  
CLERK OF THE  
BOARD OF SUPERVISORS

December 17, 2015

**CITY COUNCIL**

Jim Farr  
*Mayor*

Tony Vallejo  
*Mayor Pro Tempore*

Roger S. Aceves  
*Councilmember*

Michael T. Bennett  
*Councilmember*

Paula Perotte  
*Councilmember*

**CITY MANAGER**  
Michelle Greene

Mr. Paul Hood  
Executive Officer  
Santa Barbara LAFCO  
105 East Anapamu Street, Room 407  
Santa Barbara, CA 93101

RE: Goleta Sphere of Influence Update

Dear Mr. Hood:

Thank you for meeting with Ms. Carman, Mr. Giles and me on December 9, 2015 regarding a potential application to revise the City of Goleta's Sphere of Influence. We appreciated the information you shared about the process, and for taking the time to receive our policy documents regarding the Sphere of Influence.

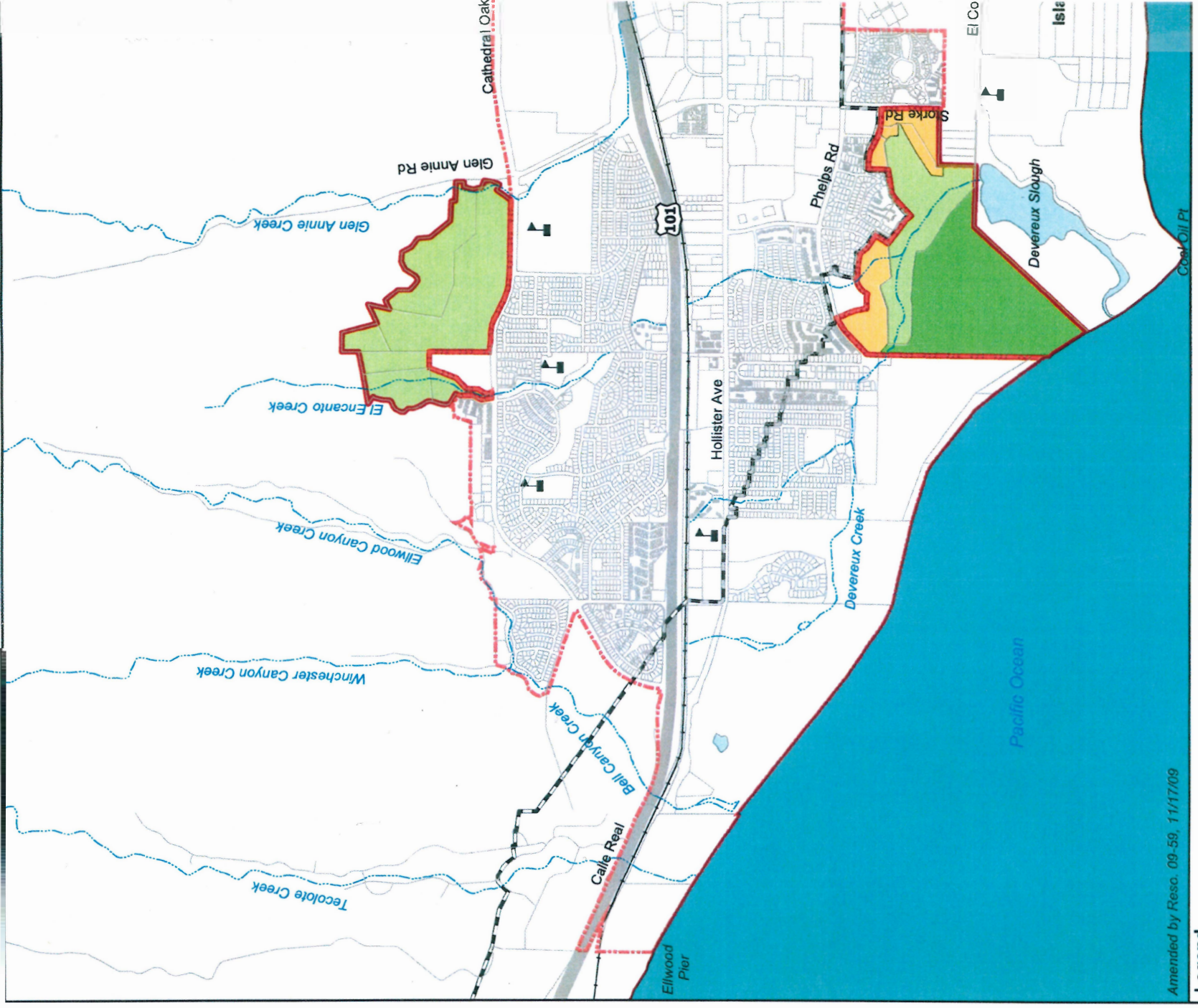
As discussed, City staff would be supportive of filing an application. However, we will need to meet with the City Council to receive direction on whether to file an application, what areas would be included, and when the application should be brought forward. I anticipate being able to bring this item to the Council's agenda in February. Once we have direction from the Council, I will contact you to advise how we intend to proceed.

In the meantime, please do not hesitate to give me a call should you have any questions.

Sincerely,

Michelle Greene  
City Manager





Amended by Reso. 09-59, 11/17/09

**Legend**

**Land Use Designations for Future Service Areas**

- Single Family Residential
- Planned Residential
- General Commercial
- Agriculture
- Open Space / Passive Recreation
- Open Space / Active Recreation
- Public / Quasi-public

**Other Features**

- Goleta City Boundary
- Coastal Zone
- Schools
- Future Service Area Boundary

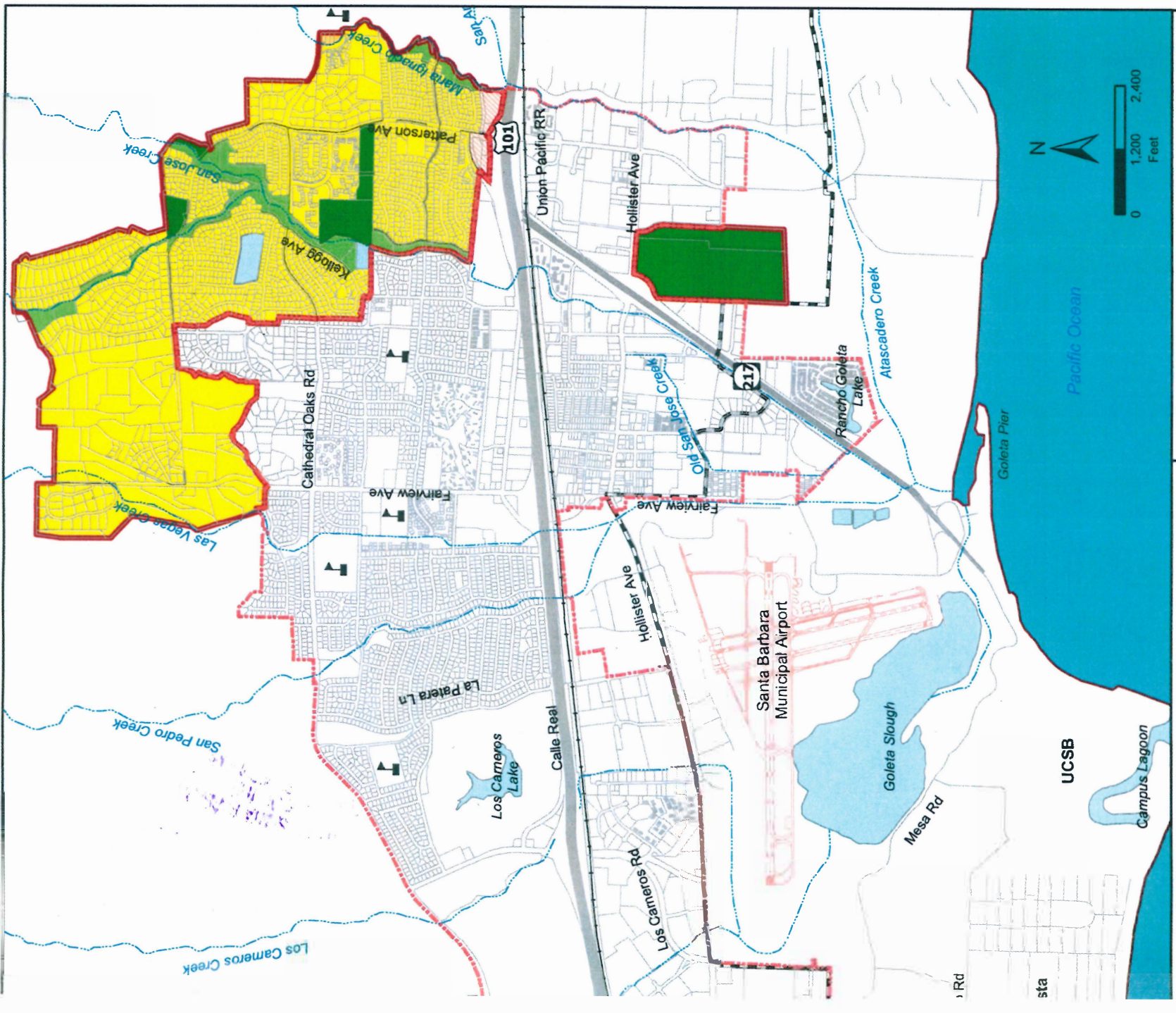


Figure 2-4

**POTENTIAL CITY OF GOLETA SERVICE AREAS**

