

Santa Barbara LAFCO

SOI/MSR Adoption

December 12, 2024

SANTA BARBARA LAFCO

105 East Anapamu Street ♦ Santa Barbara CA 93101
805/568-3391 ♦ FAX 805/568-2249

www.sblafco.org ♦ lafco@sblafco.org

Summary

MSR/SOI Update Process

- CKH Act Requires Update of SOI for a jurisdiction every five years
- Sphere is a 20 years planning boundary
- Service Review evaluates 7 factors
- 30-day public review period completed
- Sphere Update/MSR Completed

Action Items	Dates
Compile and Gather Information	Feb - Sept 2024
Prepare documentation: SOI Update-MSR-CEQA	April - Oct 2024
Admin Draft Review and Comment. 30-day comment period	Aug 2024
Release for Public Review and Comment. 30-day comment period	Nov 2024
Respond to Comments	Nov 2024
Public Hearing regarding the Service Review/Sphere of Influence Update	Dec 2024

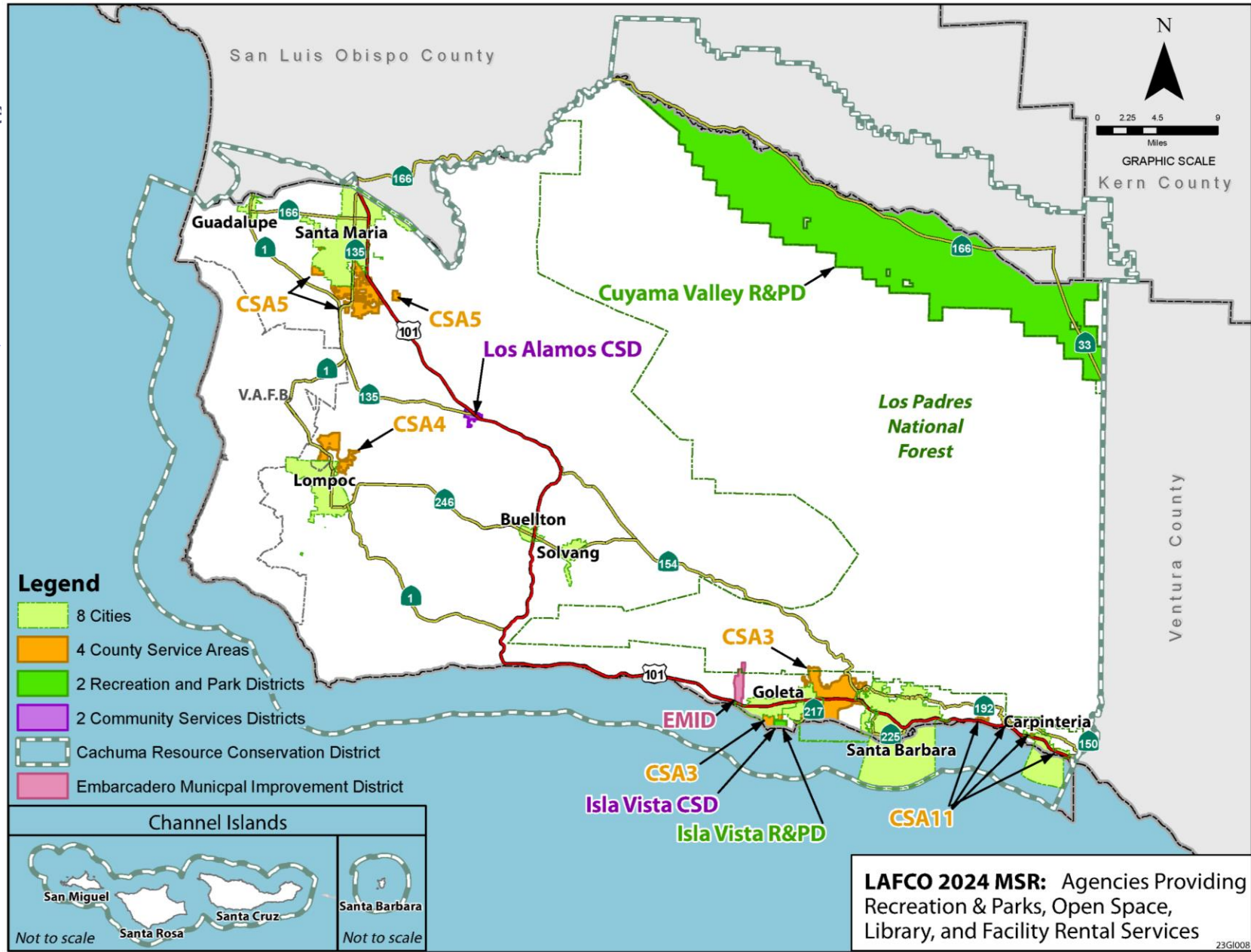
Santa Barbara Countywide Sphere and Service Review of 18 Agencies

Special Districts

Cachuma Resource Conservation District, Cuyama Valley Recreation & Parks District, Embarcadero Municipal Improvement District, Isla Vista Recreation & Park District, Los Alamos Community Services District, Isla Vista Community Services District, County Service Area 3 (Goleta), County Service Area 4 (North Lompoc), County Service Area 5 (Orcutt), County Service Area 11 (Summerland & Carpinteria)

Cities

City of Buellton
 City of Carpinteria
 City of Goleta
 City of Guadalupe
 City of Lompoc
 City of Santa Barbara
 City of Santa Maria
 City of Solvang



23GI008

Key Determinations

- All six of the Independent Special Districts (Cachuma RCD, Cuyama Valley R&P, EMID, Isla Vista R&P, Los Alamos CSD, & Isla Vista CSD) have a Sphere of Influence that match their district boundaries
- Three of the County Service Areas (CSA 3, CSA 4, & CSA 11) also have Spheres of Influence that match their district boundaries.
- County Service Area 5 has an SOI that's 3,616-acres beyond the boundary it serves.
- Five Cities have Spheres of Influence that extend beyond their service boundaries: Carpinteria, Lompoc, Santa Barbara, Santa Maria and Solvang.
- The Cities of Buellton, Goleta, and Guadalupe have a coterminous Spheres.
- The recommended Sphere of Influence would maintain existing boundaries for eight (8) agencies. (Total of 8 agencies)

Cachuma Resource Conservation District, Cuyama Valley Recreation & Parks District, Isla Vista Recreation & Park District, Los Alamos Community Services District, County Service Area 3 (Goleta Valley), County Service Area 4 (North Lompoc), County Service Area 5 (Orcutt), and County Service Area 11 (Summerland & Carpinteria Area)

Public Outreach

LAFCO

Santa Barbara Local Agency
Formation Commission

- Regular agenized Commission Updates
- Notified interested parties & advertised in the newspaper
- Available Online: WWW.SBLAFCO.ORG
- Agencies, County & LAFCO Offices

Business Item No. 1

Comments/Changes

- Attachment D includes 6 comments & proposed change table
- All Changes are recommended

- Thank You Everyone for providing input
 - All 18 Agencies
 - County Departments
 - Outside Agencies
 - Public

Recommendation

- Take Public Comments
- Commissioner Questions
- Approve CEQA documentation and determine that the Exemptions are adequate
- Approve the Sphere Update and Service Review