

RESOLUTION OF THE  
SANTA BARBARA LOCAL AGENCY FORMATION COMMISSION  
MAKING WRITTEN DETERMINATIONS AND CEQA FINDINGS  
AND ADOPTING THE SPHERE OF INFLUENCE  
OF THE SANTA YNEZ RIVER WATER CONSERVATION  
DISTRICT IMPROVEMENT DISTRICT NO. 1

WHEREAS, pursuant to the Cortese/Knox/Hertzberg Local Government Reorganization Act (Government Code Section 56425 et seq.) the Commission is required to adopt a sphere of influence for each city and special district, and

WHEREAS, Government Code Section 56430 directs the Commission to conduct a review of municipal services not later than the time it considers an action to establish or update a sphere of influence, and

WHEREAS, the Commission has conducted a municipal service review for the Santa Ynez River Water Conservation District Improvement District No. 1, and

WHEREAS, in the manner required by law, the Executive Officer has given notice of the public hearing by the Commission on the proposed sphere of influence; and

WHEREAS, the Commission has heard, discussed and considered all relevant evidence, including but not limited to, the Executive Officer report and recommendation, applicable general and specific plans and all testimony, correspondence and exhibits received during the public hearing, all of which are included herein by reference.

NOW THEREFORE, IT IS RESOLVED, DETERMINED AND ORDERED as follows:

1. The project before the Commission is adoption of the Santa Ynez River Water Conservation District Improvement District No. 1 Sphere of Influence.
2. The Commission finds this action to be exempt from CEQA because the sphere of influence boundary is coterminous with the District boundary.
3. The Sphere of Influence is hereby adopted to be coterminous with the District boundaries as shown on the attached map.
4. This resolution was adopted on April 5, 2012 and is effective on the date signed by the Chair.

AYES:

NOES:

ABSTAINS:

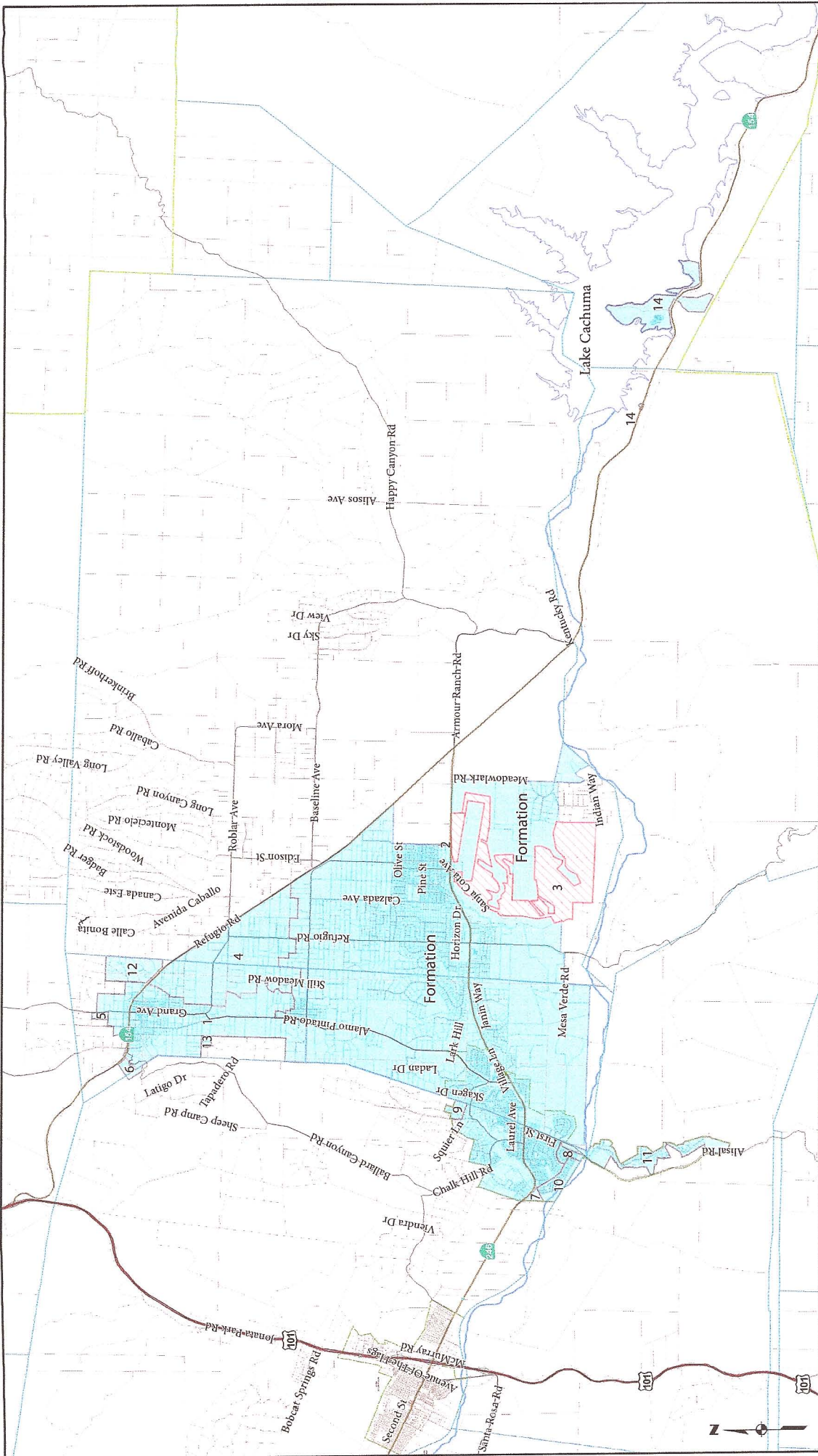
ABSENT:

Dated: \_\_\_\_\_

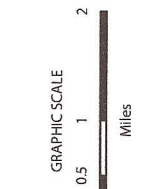
\_\_\_\_\_  
Chair, Santa Barbara Local Agency Formation Commission

ATTEST

\_\_\_\_\_  
Mary Everett, Commission Clerk, Santa Barbara Local Agency Formation Commission



- Legend**
- Freeways
  - Highways
  - Roads
  - Santa Ynez River
  - Parcels
  - Cities
  - Lake Cachuma
  - Sections
  - Los Padres National Forest
  - Ranchos and Townships
  - Annexation
  - Formation
  - Detachment



Santa Ynez River Water Conservation District  
**Improvement District No. 1**

Compiled by the Office of the County Surveyor in August of 2010. Formed by Santa Ynez River Water Conservation District Board of Directors Resolution 103, Recorded 7/20/1961.  
 NOTICE OF DISCLAIMERS: This data is for reference only. Although every effort has been made to ensure the accuracy of information, errors and conditions originating from physical sources used to develop the database may be reflected in this data. Santa Barbara County shall not be liable for any errors, omissions or damages that result from inappropriate use of this document. No level of accuracy is claimed for the boundary lines shown hereon and this should not be used to obtain coordinates, values, bearings or distances.



## Santa Ynez River Water Conservation District Improvement District No. 1

Internal No.	Title	Type	BOS Date	Dist Number	District Res	District Date	LAFCO No	LAFCO Res	LAFCO Date	Instrument	Recorded Equalization	Secretary of State
0	Formation	Formation		103		7/7/1959						
1	Los Olivos Area, A	Annexation			280	10/3/1963				2017/393-412	10/16/1963	
2	Los Olivos Area, B	Annexation			280	10/3/1963				2017/393-412	10/16/1963	
3	Gaihey Ranch	Detachment			303	12/18/1964				2093/942-953	3/1/1965	
4	Refugio Road Area	Annexation			317, 319	2/3/1966				2146/1378-1400	4/7/1966	
5	Sides Property	Annexation			317, 319	2/3/1966				2146/1378-1400	4/7/1966	
6	Hansen Property	Annexation			317, 319	2/3/1966				2146/1378-1400	4/7/1966	
7	SMID No. 4 Area	Annexation			318, 320	2/3/1966				2146/1401-1413	4/7/1966	
8	SMID No. 9 Area	Annexation			318, 320	2/3/1966				2146/1401-1413	4/7/1966	
9	SMID Fredensborg Area	Annexation			1967-11	10/13/1967						11/1/1967
10	SMID 1970-1 Area	Annexation	5/7/1973		356	7/8/1970						
11	Alisal Ranch	Annexation			367, 370	7/27/1972						
12	Stewart	Annexation			424, 426	9/30/1981						
13	Osborne	Annexation			425, 427	9/30/1981						
14	Cachuma Park	Annexation			291,449	12/13/1983	83-AD-6	83-643	10/30/1983	1983-0053181	10/4/1983	10/17/1983