

# **CITY OF GOLETA**

## **MUNICIPAL SERVICE REVIEW AND SPHERE OF INFLUENCE UPDATE**

Report to the  
**Santa Barbara Local Agency  
Formation Commission**

September 2005

## 1. INTRODUCTION

This report regarding the City of Goleta was prepared by the Santa Barbara Local Agency Formation Commission (“LAFCO”) in accordance with Section 56430 of the California Government Code. It responds to the requirement that LAFCO conduct a Municipal Service Review (MSR) to study the delivery of municipal services and update spheres of influence.

The MSR evaluates services provided by the City and issues regarding its sphere of influence. MSR Guidelines prepared by the State Office of Planning and Research were referred to in developing information, performing analysis and organizing this study.

This report describes service delivery and related issues for LAFCO to consider and presents determinations as required by law. The decision to approve or disapprove any determinations or policies rests entirely with the Commission.

Written determinations regarding the MSR and sphere of influence update are provided for the Commission’s consideration. This report is an informational document and does not substitute for discretionary decisions that can only be made by the Commission.

This Report is subject to reconsideration and revision as directed by the LAFCO staff or by the Commission during the course of its deliberations.

## 2. MUNICIPAL SERVICE REVIEW

### Description of City

The City was incorporated February 1, 2002 and is the newest of the eight cities in Santa Barbara County. It operates pursuant to the general laws of the State of California (Government Code, Section 34000 et seq.).

It is governed by a five-member city council all of whom are elected at large. It has a city manager form of government. See the organization chart.

The City is in southern Santa Barbara County, at the western end of the Goleta Valley. It is located on either side of U.S. Hwy 101. It is adjacent to the Santa Barbara Airport and the UCSB campus

LAFCO has not adopted a sphere of influence for the City; its approval is dependent on the City adopting its general plan. A map of the City is included in this report.

### City Services

The City provides a broad variety of municipal services, which include:

- Law enforcement including traffic law enforcement
- Parks and open space maintenance
- Land use planning and regulation of building
- Library services
- Refuse collection, recycling and disposal
- Street maintenance
- Street lighting
- Drainage and storm water disposal

The Request for Information for Municipal Service Reviews includes significant detail about the services provided by the City including a discussion of services provided in concert with other public agencies. A copy is available in the LAFCO office.

The City participation in joint powers authorities with other public agencies is detailed in the Request for Information.

### Other Governmental Agencies within the City

Local agencies that overlap the City include the Embarcadero Municipal Improvement District, Goleta Sanitary District, Goleta Water District, Goleta West Sanitary District, Santa Barbara Metropolitan Transit District, Santa Barbara County Fire Protection District and Santa Barbara Coastal Vector Control District.

### 3. MSR DETERMINATIONS

This portion of the report addresses the MSR factors specified in LAFCO's governing statute. LAFCO is responsible for assessing whether the City is reasonably capable of providing needed resources and infrastructure to serve areas within the City and its Sphere of Influence. It is important that infrastructure and resources are available when SOI revisions or annexations occur.

#### **Infrastructure Needs and Deficiencies**

The City provides and maintains facilities that extend public services to its residents and property owners, primarily roads, drainage facilities, parks and City offices. The City is in the process of developing a Capital Improvement Plan (CIP).

#### **Growth and Population Projections**

The City does not accept for use in Municipal Service Reviews the Santa Barbara County Association of Government's growth projections. It has adopted interim General Plan policies but has not adopted a General Plan to assess services needs for the City for the next several years, growth projections or plans to maintain municipal service levels.

#### **Financing Constraints and Opportunities**

The City is subject to the funding regulations that apply to municipalities throughout the State and is therefore subject to broad changes in revenue allocation based on the State budget, its relationship to local funding sources and revenue transfers.

As a newly incorporated city, Goleta is even more constrained as a result of the revenue neutrality agreement governing City revenues. Although significant sales taxes revenues are generated within the City, it is obligated to share portions of those and other revenues with the County.

#### **Cost-Avoidance Opportunities**

There are no obvious cost avoidance opportunities. It may be possible for the City to spread central administrative costs over a greater number of functions if the City becomes more of a "full service" agency.

#### **Opportunities for Rate Restructuring**

There are no obvious opportunities for rate restructuring in City operations.

## **Opportunities for Shared Facilities**

Some sharing is already occurring in terms of library and transit services in that the City participates cooperatively with other local agencies and does not duplicate these facilities.

## **Government Structure Options**

There are opportunities for governmental structure options. Proponents of incorporating the City of Goleta chose to allow the overlap of the city with existing public service agencies, although in some communities it is common for cities to provide such services.

The City's Request for Information states, "Any proposed consolidation or other modification of organizational structures for delivery of sewage collection and treatment services affecting territory within the City of Goleta should be carefully evaluated.

## **Management Efficiencies**

The City started municipal life with an interim city manager and no staff. It has grown and added capacity in order to serve its residents and customers. The General Plan process has occupied a significant amount of effort with a limited number of staff. It is anticipated that the City will become increasingly effective as time goes on.

## **Local Accountability and Governance**

The City is a relatively compact government, which enhances the ability of the public to participate in its activities. The City Council is elected by and accountable to the voters who reside in the City.

The City is in the process of obtaining equipment to broadcast public meetings. There is a City website with information about City activities.

# **4. SPHERE OF INFLUENCE REVIEW AND UPDATE**

## Description of Current Sphere of Influence

The City's sphere of influence will be defined following adoption of the City General Plan. A map of the City is included.

## Potential Sphere Changes

In response to the MSR Request for Information, the City responded as follows however a more recent letter from the City indicates this may not be the case:

Do you feel that your agency's boundary is correct at this time?	Yes
Are there areas your agency desires or plans to serve that are not now within its boundaries or its sphere of influence?	No

### Sphere of Influence Determinations

At such time in the future that a sphere is proposed it would be appropriate to consider the information in this MSR and the City General Plan in making that determination,

## 5. ACKNOWLEDGEMENTS & REFERENCES

The Santa Barbara LAFCO staff prepared this Municipal Service Review. Responsibility for any errors or omissions rests with those who prepared the report.

The City of Goleta provided the information and documents upon which the evaluation is based. City staff, notably Assistant City Manager Luci Serlet was instrumental in providing data.

Mapping services were provided by JDL Mapping.

### Available Documentation

The “Request for Information for Municipal Service Reviews” submitted by the City and the supporting documents referred to therein are available in the LAFCO office.

## 6. RECOMMENDATIONS

In consideration of information gathered and evaluated during the Municipal Service Review it is recommended the Commission accept this report and defer adoption of a sphere of influence for the City of Goleta until the City General Plan is adopted.

08-215

February 1, 2008

Mayor Michael Bennett  
Prior Mayor Jean Blois  
Roger Acever  
Eric Onnen  
Jonny Wallis

CITY OF GOLETA  
CALIFORNIA

FEB 01 2008

RECEIVED

Dear Mr. Mayor and Members of the Goleta City Council,

As residents of the North Fairview area it has come to our attention that you would like to add our neighborhood to your Sphere of Influence. We are currently Unincorporated County of Santa Barbara. Please see the attached petition which states that we do NOT wish to be added to your sphere of influence or added to the City of Goleta. We are very happy with our current situation in the county and wish to remain as we currently are.

You will see that we have 97 signatures and we can obtain more if needed. We have forwarded copies of this petition to Janet Wolf and Mr. Braitman LAFCO. We wanted to make known the wishes of our neighborhood to save you the time and trouble of something that we do not want.

Please advise us if there is anything else you need to remove this from your plans.

Thank you,



Sharon Wilson  
5990 Cuesta Verde  
Goleta, CA 93117  
805-964-8265



Gail Shannon  
1146 N. Fairview  
Goleta, CA 93117  
805-967-3607

ATTACHMENT B

To: Mayor Jean Blois  
 Members of the Goleta City Council  
 Supervisor Janet Wolf:

We the residents & homeowners of the unincorporated area of the North Fairview area, state that we do not want to be annexed into the City of Goleta or added to the City of Goleta Sphere of Influence. We wish to remain in our current state as an unincorporated area of Santa Barbara County.

Print Name	Address	City	Zip	Signature	Date
Carol Ann Anderson	1550 N Fairview	Goleta	93117	Carol Ann Anderson	1/24/08
RUTH LAWE	1476 HOLIDAY HILL RD	Goleta	93117	Ruth E. Lane	1/24/08
Judy Braun	1461 Holiday Hill Rd	Goleta	93117	Judy Braun	1/24/08
Dan Braun	1461 Holiday Hill Rd	Goleta	93117	Dan Braun	1/24/08
Kristy Braun	1461 Holiday Hill	Goleta	93117	Kristy Braun	1/24/08
MARY TROUP	1420 HOLIDAY HILL	GOLETA	93117	Mary S. Troup	1/26/08
IMMUS ECKERT	1415 Holiday Hill Rd	GOLETA	93117	Immus Eckert	1/26/08
HUGH DAVIS	1361 Holiday Hill Rd	Goleta	93117	Hugh Davis	1-26-08
DIANNE DAVIS	1361 Holiday Hill	Goleta	93117	Dianne Davis	1-26-08
Brent Cole	1425 Fairview	County	93117	Brent Cole	1-26-08
Claire Nouck	1551 Holiday Hill	Goleta	93117	Claire Nouck	1-26-08
PHIL ARCHENBROOK	1475 Holiday Hill	GOLETA	93117	Phil Archenbrook	1-26-08
MARY JANE ARCHENBROOK	1475 Holiday Hill	GOLETA	93117	Mary Jane Archenbrook	1-26-08
ALICE M. VELKES	1450 Holiday Hill Rd	GOLETA	93117	Alice M. Velkes	1-26-08
BRUCE M. VELKES	1450 HOLIDAY HILL RD	GOLETA	93117	Bruce M. Velkes	JRM 26 08
TERI DELSCHLAGER	1465 HOLIDAY HILL RD	GOLETA	93117	Teri S. DelSchlager	1-28-08
ALVIN IRVINE	1465 HOLIDAY HILL RD	GOLETA	93117	Alvin Irvine	1-28-08
JOAN LEIPNIK	1425 Holiday Hill Rd	Goleta	93117	Joan Leipnik	1/28/08
Cynthia L. Kelly	1311 Holiday Hill Rd.	Goleta	93117	Cynthia L. Kelly	1/28/08



To: Mayor Jean Blois  
 Members of the Goleta City Council  
 Supervisor Janet Wolf:

We the residents & homeowners of the unincorporated area of the North Fairview area, state that we do not want to be annexed into the City of Goleta or added to the City of Goleta Sphere of Influence. We wish to remain in our current state as an unincorporated area of Santa Barbara County.

Print Name	Address	City	Zip	Signature	Date
DOROTHY HOLMES	1124 N. FAIRVIEW AVE	GOLETA	93117	<i>[Signature]</i>	1/19/08
A. Cole	1425 N. Fairview Ave	Goleta	93117	<i>[Signature]</i>	1/19/08
RYN OAK	1551 Holiday Hill	Goleta	93117	<i>[Signature]</i>	1/14/08
Evalyn Robbins	1540 Holiday Hill Rd	Goleta	93117	<i>[Signature]</i>	1/19/08
KEVIN RILEY	1530 Holiday Hill	Goleta	93117	<i>[Signature]</i>	1/19
Janice Riley	1530 Holiday Hill Rd	Goleta	93117	<i>[Signature]</i>	1/19/08
David W. Harms	1158 N. Fairview	Goleta	93117	<i>[Signature]</i>	1/19/08
Nathaniel Sommer	1455 Holiday Hill Rd	Goleta	93117	<i>[Signature]</i>	1/24/08
Jerry Cort	5915 Via Lemora	Goleta	93117	<i>[Signature]</i>	1/26/08
Sharon Cort	5915 Via Lemora	Goleta	93117	<i>[Signature]</i>	1/26/08
ALEXANDRA FILIPPENKO	5903 VIA LEMORA	GOLETA	93117	<i>[Signature]</i>	1/26/08
Jamie Kwako	5906 Via Lemora	Goleta	93117	<i>[Signature]</i>	1/26/08
Robert Serrano	5939 VIA LEMORA	Goleta	93117	<i>[Signature]</i>	1-26-08
JEAN PAYNTER	5944 VIA LEMORA	Goleta	93117	<i>[Signature]</i>	1/26/08
DONALD PAYNTER	5944 VIA LEMORA	Goleta	93117	<i>[Signature]</i>	1/26/08
Kim Nelson	5939 Via Lemora	Goleta	93117	<i>[Signature]</i>	1/26/08
Jeff Rambolt	5939 Via Lemora	Goleta	93117	<i>[Signature]</i>	1-26-08
RON JETER	5939 Via Lemora	Goleta	93117	<i>[Signature]</i>	1-26/08
DARYL COOPER	5968 VIA LEMORA	Goleta	93117	<i>[Signature]</i>	1/26/08
JAMES RICE	1104 N. FAIRVIEW	GOLETA	93117	<i>[Signature]</i>	1/26/08

To: Mayor Jean Blois  
 Members of the Goleta City Council  
 Supervisor Janet Wolf:

We the residents & homeowners of the unincorporated area of the North Fairview area, state that we do not want to be annexed into the City of Goleta or added to the City of Goleta Sphere of Influence. We wish to remain in our current state as an unincorporated area of Santa Barbara County.

Print Name	Address	City	Zip	Signature	Date
Sharon W. Wills	5990 Cuesta Verde	GoL	93117	Sharon W. Wills	12/2/07
Gail Shannon	1146 N. Fairview	GoL	93117	Gail Shannon	12/2/07
Howard Shannon	1146 N. Fairview	GoL	93117	Howard Shannon	12/2/07
Tracy Reynolds	1189 Edward Pl.	GoL	93117	Tracy Reynolds	12/2/07
Bill Spaulding	1189 Edward Pl	GoL	93117	Bill Spaulding	12/2/07
Robert Reynolds	1189 Edward Pl.	GoL	93117	Robert Reynolds	12/2/07
JOHN TEVENAN	1192 EDWARD PL	GoL	93117	John Tevenan	12/2/07
JUDIE TEVENAN	1192 EDWARD PL	GoL	93117	Judie Tevenan	12/2/07
Steve Ardavin	1180 Edward Pl	GoL	93117	Steve Ardavin	12/2/07
LOUIS WM. ARDWIN	1180 EDWARD	GoL	93117	Louis Wm. Ardwin	12/2/07
Milton McIntosh	1175 Edward Pl.	GoL	93117	Milton McIntosh	12-2-07
CHARLOTTE BALDRIDGE	5988 CUESTA VERDE	GoL	93117	Charlotte Baldridge	12-2-07
AM GESSWEN	5991 Cuesta Verde	GoL	93117	Am Gesswen	12/2/07
Pete Ramsdell	5986 Cuesta Verde	GoL	93117	Pete Ramsdell	12/2/07
Rita Ojeda	5989 Cuesta Verde	GoL	93117	Rita Ojeda	12-02-07
Santos Ojeda	5989 CUESTA VERDE	GoL	93117	Santos Ojeda	12/02/07
Terry Benedetto	5984 Cuesta Verde	GoL	93117	Terry Benedetto	12/2/07
Chris DORN	5983 Cuesta Verde	GoL	93117	Chris Dorn	12/2/07
JANINE DORN	5983 Cuesta Verde	GoL	93117	Janine Dorn	12/2/07
Scott N. Wilson	5990 Cuesta Verde	GoL	93117	Scott N. Wilson	12/2/07

To: Mayor Jean Blois  
 Members of the Goleta City Council  
 Supervisor Janet Wolf:

We the residents & homeowners of the unincorporated area of the North Fairview area, state that we do not want to be annexed into the City of Goleta or added to the City of Goleta Sphere of Influence. We wish to remain in our current state as an unincorporated area of Santa Barbara County.

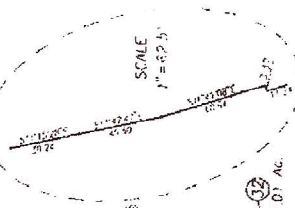
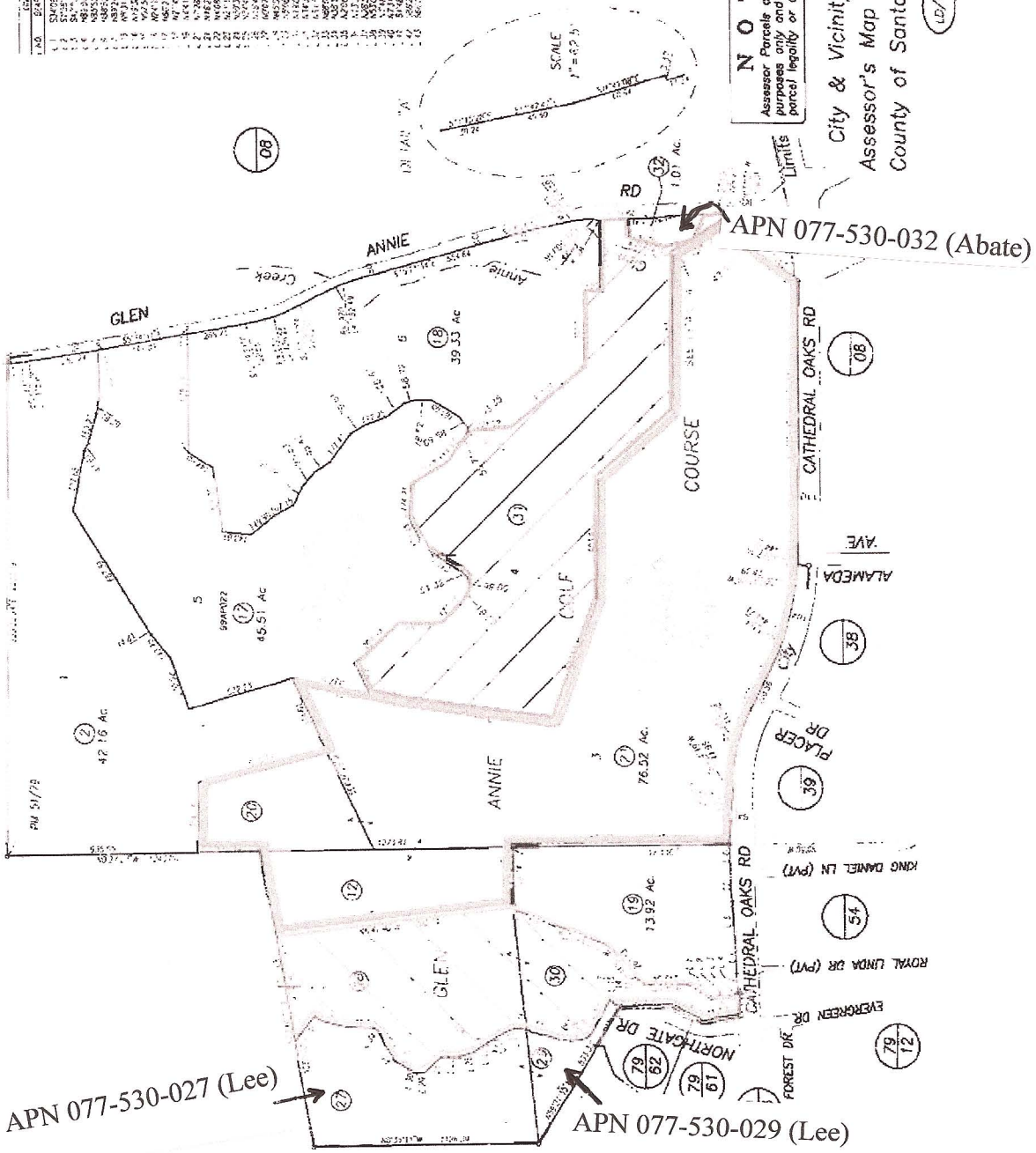
Print Name	Address	City	Zip	Signature	Date
John Peterson	5992 Cuesta Verde	Goleta	93117	John Peterson	12/2/07
Shellie Davis	5995 Cuesta Verde	Goleta	93117	Shellie Davis	12/2/07
John Davis	5995 Cuesta Verde	Goleta	93117	John Davis	12/2/07
Colleen Lynch	5996 West Verde	Goleta	93117	Colleen Lynch	12/2/07
Earl Lynch	5996 Cuesta Verde	Goleta	93117	Earl Lynch	12/2/07
Grace Porten	5998 Cuesta Verde	Goleta	93117	Grace S. Porter	12/2/07
William Porten	5998 Cuesta Verde	Goleta	93117	William S. Porter	12/2/07
Marilyn Sheaffer	1198 Edward Pl	Goleta	93117	Marilyn Sheaffer	1/19/08
Steve Sheaffer	1198 Edward Pl.	Goleta	93117	Steve Sheaffer	1/19/08
Patricia Redmond	1148 N. Fairview Ave	Goleta	93117	Patricia Redmond	1/19/08
Russ Redmond	1148 N. Fairview	Goleta	93117	Russ Redmond	1/19/08
Ken Smith	1154 N. Fairview	Goleta	93117	Kenneth A. Smith	1/17/08
Timothy M. Brown	1152 N. Fairview	Goleta	93117	Timothy M. Brown	1/19/08
Julio Green Williams	1144 N. Fairview	Goleta	93117	Julio Green Williams	1/19/08
Jan K. Williams	1144 N. Fairview	Goleta	93117	Jan K. Williams	1/19/08
Gary Gruetzmacher	1140 N. Fairview	Goleta	93117	Gary Gruetzmacher	1/19/08
Sadie Lyde	1138 N. Fairview	Goleta	93117	Sadie Lyde	1/19/08
David Lyde	1138 N. Fairview	Goleta	93117	David Lyde	1/19/08
John Givens	1133 N. Fairview	Goleta	93117	John Givens	1/19/08
Alan Holmes	1124 N. Fairview	Goleta	93117	Alan Holmes	1/19/08







NO.	OWNER	ACRES
1.1	SMITHSONIAN	115.70
1.2	SMITHSONIAN	105.70
1.3	SMITHSONIAN	27.15
1.4	SMITHSONIAN	107.74
1.5	SMITHSONIAN	122.20
1.6	SMITHSONIAN	111.70
1.7	SMITHSONIAN	21.55
1.8	SMITHSONIAN	21.55
1.9	SMITHSONIAN	21.55
1.10	SMITHSONIAN	21.55
1.11	SMITHSONIAN	21.55
1.12	SMITHSONIAN	21.55
1.13	SMITHSONIAN	21.55
1.14	SMITHSONIAN	21.55
1.15	SMITHSONIAN	21.55
1.16	SMITHSONIAN	21.55
1.17	SMITHSONIAN	21.55
1.18	SMITHSONIAN	21.55
1.19	SMITHSONIAN	21.55
1.20	SMITHSONIAN	21.55
1.21	SMITHSONIAN	21.55
1.22	SMITHSONIAN	21.55
1.23	SMITHSONIAN	21.55
1.24	SMITHSONIAN	21.55
1.25	SMITHSONIAN	21.55
1.26	SMITHSONIAN	21.55
1.27	SMITHSONIAN	21.55
1.28	SMITHSONIAN	21.55
1.29	SMITHSONIAN	21.55
1.30	SMITHSONIAN	21.55
1.31	SMITHSONIAN	21.55
1.32	SMITHSONIAN	21.55
1.33	SMITHSONIAN	21.55
1.34	SMITHSONIAN	21.55
1.35	SMITHSONIAN	21.55
1.36	SMITHSONIAN	21.55
1.37	SMITHSONIAN	21.55
1.38	SMITHSONIAN	21.55
1.39	SMITHSONIAN	21.55
1.40	SMITHSONIAN	21.55
1.41	SMITHSONIAN	21.55
1.42	SMITHSONIAN	21.55
1.43	SMITHSONIAN	21.55
1.44	SMITHSONIAN	21.55
1.45	SMITHSONIAN	21.55
1.46	SMITHSONIAN	21.55
1.47	SMITHSONIAN	21.55
1.48	SMITHSONIAN	21.55
1.49	SMITHSONIAN	21.55
1.50	SMITHSONIAN	21.55



**NOTICE**  
Assessor's Parcels are for tax assessment purposes only and do not indicate either parcel legality or a valid building site.

City & Vicinity of Goleta  
Assessor's Map Bk, 077-Pg, 5.3  
County of Santa Barbara, Calif.

LD/04 Asses Goleta City Boundary

# Chicago Title

"This plat is for your aid in locating your land with reference to streets and other parcels. While this plat is believed to be correct, the Company assumes no liability for any loss occurring by reason of reliance thereon."