

SANTA YNEZ COMMUNITY SERVICES DISTRICT

MUNICIPAL SERVICE REVIEW AND SPHERE OF INFLUENCE UPDATE

Report to the
**Santa Barbara Local Agency
Formation Commission**

April 2012

1. INTRODUCTION

This report regarding the Santa Ynez Community Services District was prepared by the Santa Barbara Local Agency Formation Commission (“LAFCO”) in accordance with Section 56430 of the California Government Code. It responds to the requirement that LAFCO conduct a Municipal Service Review (MSR) to study the delivery of municipal services and update spheres of influence.

The MSR evaluates services provided by the District and issues regarding its sphere of influence. This report describes service delivery and related issues for LAFCO to consider and presents determinations as required by law. The decision to approve or disapprove any determinations or policies rests entirely with the Commission.

Written determinations regarding the MSR and sphere of influence update are provided for the Commission’s consideration. This report is an informational document and does not substitute for discretionary decisions that can only be made by the Commission.

This Report is subject to reconsideration and revision as directed by the LAFCO staff or by the Commission during the course of its deliberations.

2. MUNICIPAL SERVICE REVIEW

Description of District

The Santa Ynez Community Services District was formed November 15, 1971 and operates pursuant to the Community Services District Act (Government Code Section 61000 et seq.).

It is located in northern Santa Barbara County, primarily north of State Highway 246, three miles east of the City of Solvang and about a mile and a half west of State Highway 154.

The District is governed by a five-member board of directors, elected at-large. A General Manager is responsible for administrative functions.

The District’s sphere of influence is larger than its boundaries, particularly in the western portion of the District, allowing for future annexations. A map is included.

District Services

The District collects and transports wastewater. Effluent from the District is treated and disposed of by the City of Solvang’s wastewater treatment plant.

The District, by contract, maintains the collection lines, pump station and wastewater treatment plant for the Chumash Tribe Indian Reservation.

The District provides streetlighting, illuminating street lights in the community.

Other Governmental Agencies within the District

Local agencies that overlap the District are the Cachuma Resource Conservation District, County Service Area 32 (Law Enforcement), Oak Hill Cemetery District, Mosquito and Vector Control District of Santa Barbara County, Santa Barbara County Fire Protection District and Santa Ynez River Water Conservation District and SYRWCD Improvement District No. 1.

3. MSR DETERMINATIONS

This portion of the report addresses the factors specified in LAFCO's governing statute for the MSR for the Santa Ynez CSD.

Infrastructure Needs and Deficiencies

The District owns and operates the sewage collection system within its boundaries, an infrastructure sufficient for current demand. Treatment and disposal of sewage is provided by the treatment plant owned and managed by the City of Solvang. The District owns 0.29 million gallons per day (average dry weather flow) of the treatment capacity, an amount that appears to be sufficient for the District's current and projected needs.

There are areas west of the District, but within its sphere, that are served by individual on-site septic disposal systems. There have been annexations to the District as property owners seek connection to the District's wastewater collection system. It is assumed this trend will continue.

Growth and Population Projections

The District indicates it accepts the Santa Barbara County Association of Government's Forecast 2000 growth projections for use in Municipal Service Reviews.

Financing Constraints and Opportunities

It is reasonable to conclude that the District's adopted service fees, contract with the Chumash Tribe and fees for new connections and projects will avoid long-term, unfunded financial obligations for improvements or maintenance.

Cost-Avoidance Opportunities

There are no obvious cost avoidance opportunities in wastewater operations though the idea of sharing overhead and administrative costs with other agencies is a potential.

Opportunities for Rate Restructuring

There are no obvious opportunities for rate restructuring.

Opportunities for Shared Facilities

Significant sharing is occurring in wastewater by joint use of the Solvang treatment plant.

Government Structure Options

The District indicated it is not interested and sees no advantage in merging with other agencies.

Management Efficiencies

The District exhibits the characteristics of a well-managed small agency operating efficiently and serving its residents and customers effectively.

Local Accountability and Governance

The Board of Directors is elected by and accountable to the voters who reside in the District.

4. SPHERE OF INFLUENCE REVIEW AND UPDATE

Description of Current Sphere of Influence

The District's sphere of influence is larger than its boundaries, particularly in the western portion of the District, allowing for future annexations. A map is included.

Sphere of Influence Determinations

Inasmuch as no changes in the sphere of influence are proposed at this time it is not necessary for the Commission to adopt or approve any determinations.

5. ACKNOWLEDGEMENTS & REFERENCES

The Santa Barbara LAFCO staff prepared this Municipal Service Review. Responsibility for any errors or omissions rests with those who prepared the report.

The District provided the basic information and documents upon which this evaluation is based.

Mapping services were provided by the County Surveyor.

6. RECOMMENDATIONS

In consideration of information gathered and evaluated during the Municipal Service Review it is recommended the Commission affirm the current Sphere of Influence and that it not be expanded or revised at this time.

RESOLUTION OF THE
SANTA BARBARA LOCAL AGENCY FORMATION COMMISSION
MAKING WRITTEN DETERMINATIONS AND CEQA FINDINGS
AND UPDATING THE SPHERE OF INFLUENCE OF THE SANTA YNEZ
COMMUNITY SERVICES DISTRICT

WHEREAS, pursuant to the Cortese/Knox/Hertzberg Local Government Reorganization Act (Government Code Section 56425 et seq.) the Commission is required to review and update, as necessary, adopted spheres of influence not less than once every five years, and

WHEREAS, Government Code Section 56430 directs the Commission in updating spheres of influence to conduct a review of municipal services not later than the time it considers an action to establish or update a sphere of influence, and

WHEREAS, the Commission has conducted municipal service reviews for local agencies within the Santa Ynez Valley, including the Santa Ynez Community Services District, and

WHEREAS, in the manner required by law, the Executive Officer has given notice of the public hearing by the Commission on the proposal; and

WHEREAS, the Commission has heard, discussed and considered all relevant evidence, including but not limited to, the Executive Officer report and recommendation, any environmental documents, applicable general and specific plans and all testimony, correspondence and exhibits received during the public hearing, all of which are included herein by reference.

NOW THEREFORE, IT IS RESOLVED, DETERMINED AND ORDERED as follows:

1. The project before the Commission is an update of the Sphere of Influence of the Santa Ynez Community Services District.
2. The Commission finds this update to be exempt from CEQA because no change in the sphere of influence is being adopted.
3. The Sphere of Influence is hereby updated and no change is made to the boundaries of the sphere as shown on the attached map.
4. This resolution is adopted on April 5, 2012 and is effective on the date signed by the Chair.

AYES:

NOES:

ABSTAINS:

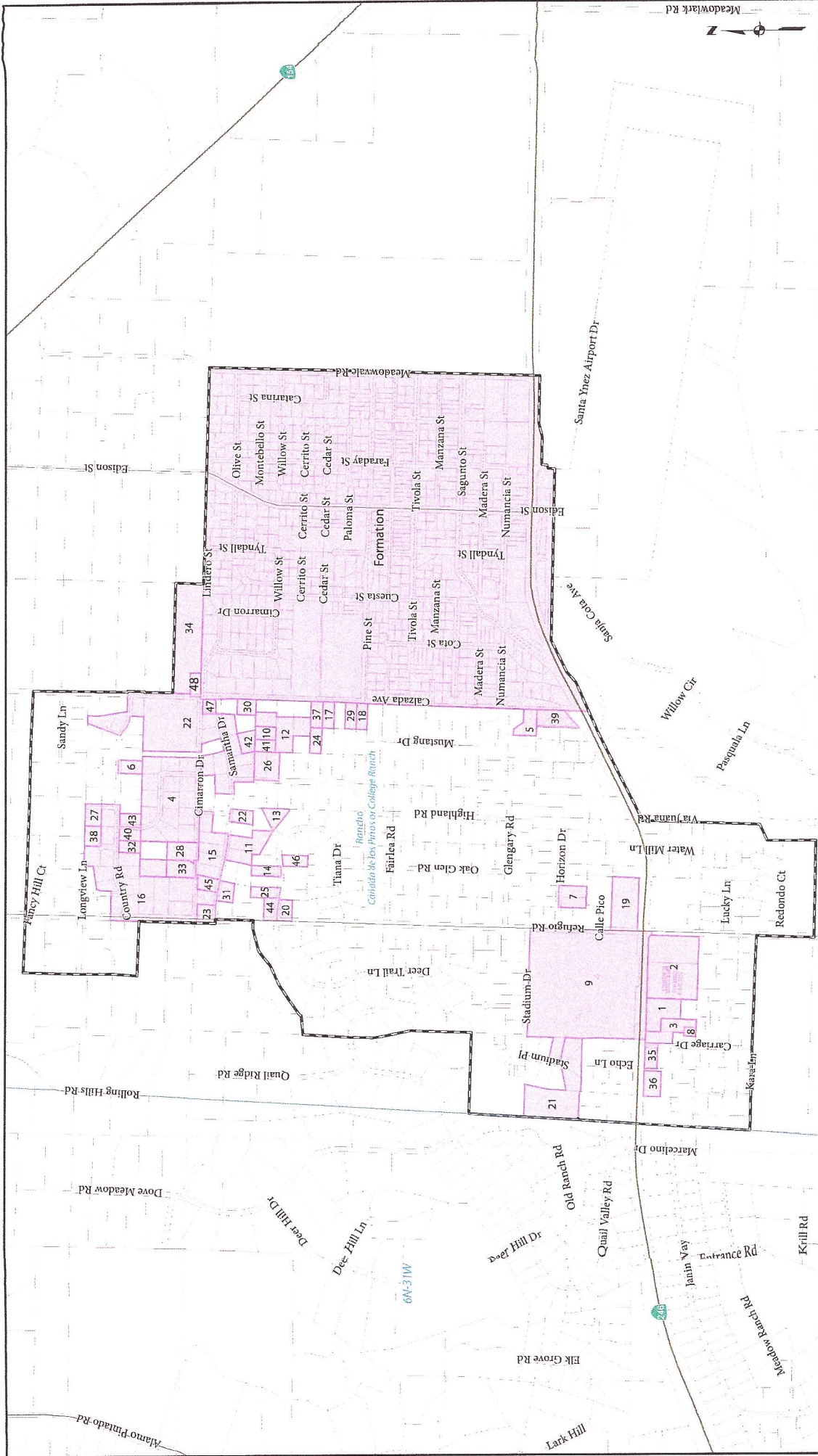
ABSENT:

Dated: _____

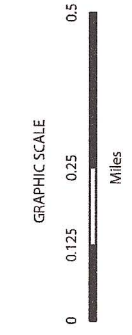
Chair, Santa Barbara Local Agency Formation Commission

ATTEST

Mary Everett, Clerk, Santa Barbara Local Agency Formation Commission



- Legend**
- Freeways
 - Highways
 - Roads
 - Parcels
 - Sections
 - Ranchos and Townships
 - Sphere of Influence
 - Formation
 - Annexation
 - Detachment



Santa Ynez Community Services District

Compiled by the Office of the County Surveyor in January of 2012. Formed by LAFCO Resolution 77-773.
 Recorded 11/29/17 1. Last Action: 48, LAFCO 11-07, Wulfang Annexation, 12/05/2011. Sphere: 09/15/2004
 See boundary activity table at <http://www.countysois.org/pwd/pwsurveyorspx?rid=23280>

NOTICE OF DISCLAIMER: This data is for reference only. Although every effort has been made to ensure the accuracy of information, errors and conditions originating from physical sources used to develop the database may be reflected in this data. Santa Barbara County shall not be liable for any errors, omissions, or delays in providing or updating the data. The user of this document, for the level of accuracy is claimed for the boundaries shown thereon and files should not be used to obtain coordinates, values, bearings, or distances.



Santa Ynez Community Services District Boundary Activity

See map at <http://www.countyofsb.org/pwd/pwsurveyor.aspx?id=23260>

InternalNo	Title	Type	Effective	LAFCO_Res	LAFCO_No	LAFCO_Date	Recorded	Instrument
0	Formation SYCSD	Formation	11/29/1971	71-773.555	1971-FD-02	11/29/1971	1971-0038783	
1	El Rancho Market	Annexation	12/17/1982	82-629	80-AD-12	12/14/1982	1982-0053070	
2	Foss Mobile Home Park	Annexation	3/22/1985	84-684	84-AD-05	3/22/1985	1985-0014286	
3	Friendship Lane	Annexation	10/23/1991	91-820	90-AD-02	10/18/1991	1991-0071262	
4	Sinclair	Annexation	11/17/1995	95-11	1995-11	9/7/1995	1995-0064566	
5	Westside #1 A	Annexation	12/18/1996	96-03	1996-03	11/7/1996	1996-0075576	
6	Westside #1 B	Annexation	12/18/1996	96-03	1996-03	11/7/1996	1996-0075576	
7	Westside #1 C	Annexation	12/18/1996	96-03	1996-03	11/7/1996	1996-0075576	
8	Westside #1 D	Annexation	12/18/1996	96-03	1996-03	11/7/1996	1996-0075576	
9	Westside #1 E	Annexation	12/18/1996	96-03	1996-03	11/7/1996	1996-0075576	
10	Westside #1 F	Annexation	12/18/1996	96-03	1996-03	11/7/1996	1996-0075576	
11	Westside #1 G	Annexation	12/18/1996	96-03	1996-03	11/7/1996	1996-0075576	
12	Westside #2 A	Annexation	9/14/1998	98-01	1998-01	2/5/1998	1998-0070465	
13	Westside #2 B	Annexation	9/14/1998	98-01	1998-01	2/5/1998	1998-0070465	
14	Westside #2 C	Annexation	9/14/1998	98-01	1998-01	2/5/1998	1998-0070465	
15	Westside #2 D	Annexation	9/14/1998	98-01	1998-01	2/5/1998	1998-0070465	
16	Westside #2 E	Annexation	9/14/1998	98-01	1998-01	2/5/1998	1998-0070465	
17	Westside #2 F	Annexation	9/14/1998	98-01	1998-01	2/5/1998	1998-0070465	
18	Westside #2 G	Annexation	9/14/1998	98-01	1998-01	2/5/1998	1998-0070465	
19	Westside #2 H	Annexation	9/14/1998	98-01	1998-01	2/5/1998	1998-0070465	
20	Westside #2 I	Annexation	9/14/1998	98-01	1998-01	2/5/1998	1998-0070465	
21	Westside #2 J	Annexation	9/14/1998	98-01	1998-01	2/5/1998	1998-0070465	
22	Westside #2 L	Annexation	9/14/1998	98-01	1998-01	2/5/1998	1998-0070465	
22	Westside #2 K	Annexation	9/14/1998	98-01	1998-01	2/5/1998	1998-0070465	
23	Westside #3 A	Annexation	11/10/2000	00-23	2000-23	10/5/2000	2000-0062203	
24	Westside #3 B	Annexation	11/10/2000	00-23	2000-23	10/5/2000	2000-0062203	
25	Westside #3 C	Annexation	11/10/2000	00-23	2000-23	10/5/2000	2000-0062203	
26	Westside #3 D	Annexation	11/10/2000	00-23	2000-23	10/5/2000	2000-0062203	
27	Westside #3 E	Annexation	11/10/2000	00-23	2000-23	10/5/2000	2000-0062203	
28	Westside #3 G	Annexation	11/10/2000	00-23	2000-23	10/5/2000	2000-0062203	
29	Westside #3 H	Annexation	11/10/2000	00-23	2000-23	10/5/2000	2000-0062203	
30	Westside #3 I	Annexation	11/10/2000	00-23	2000-23	10/5/2000	2000-0062203	
31	Phillips	Annexation	7/30/2001	01-06	2001-06	7/9/2001	2001-0082191	
32	Elder	Annexation	1/2/2002	01-14	2001-14	12/6/2001	2002-0000763	
33	Drake/Seymour Parcel A	Annexation	1/22/2002	01-16	2001-16	12/6/2001	2002-0006181	
34	Drake/Seymour Parcel B	Annexation	1/22/2002	01-16	2001-16	12/6/2001	2002-0006181	

InternalNo	Title	Type	Effective	LAFCO Res	LAFCO No	LAFCO Date	Recorded	Instrument
35	Westside #4 Parcel 1	Annexation	1/22/2002	01-15	2001-15	12/6/2001	1/22/2002	2002-0006182
36	Westside #4 Parcel 2	Annexation	1/22/2002	01-15	2001-15	12/6/2001	1/22/2002	2002-0006182
37	Westside #4 Parcel 3	Annexation	1/22/2002	01-15	2001-15	12/6/2001	1/22/2002	2002-0006182
38	Asselstine	Annexation	7/5/2002	02-07	2002-07	5/2/2002	7/5/2002	2002-0065209
39	Pacheco Annex	Annexation	6/1/2005	04-09	2004-09	12/2/2004	6/1/2005	2005-0051272
40	Ignacio	Annexation	9/7/2005	05-10	2005-10	6/2/2005	9/7/2005	2005-0087008
41	Malmeister Annex	Annexation	12/23/2005	05-15	2005-15	11/3/2005	4/19/2006	2006-0031007
42	Gardner Annex	Annexation	6/1/2006	05-12	2005-12	8/4/2005	6/1/2006	2006-0044109
43	Poor Annexation	Annexation	6/1/2006	06-04	2006-04	4/6/2006	6/1/2006	2006-0044108
44	Stewart Annexation	Annexation	10/4/2006	06-08	2006-08	5/4/2006	10/4/2006	2006-0077980
45	Valdes Annexation	Annexation	3/10/2008	07-19	2007-19	2/7/2008	3/10/2008	2008-0013465
46	Brundidge Annexation Parcel A	Annexation	11/2/2009	09-07	2009-07	11/2/2009	11/2/2009	2009-0066340
47	Brundidge Annexation Parcel B	Annexation	11/2/2009	09-07	2009-07	11/2/2009	11/2/2009	2009-0066340
48	Wulftang Annexation	Annexation	12/5/2011	11-07	2011-07	9/3/2011	12/5/2011	2011-0070814
SYCSD Sphere of Influence		SOI	9/15/2004			9/15/2004		