

Santa Barbara LAFCO

SOI/MSR Adoption

January 11, 2024

Summary

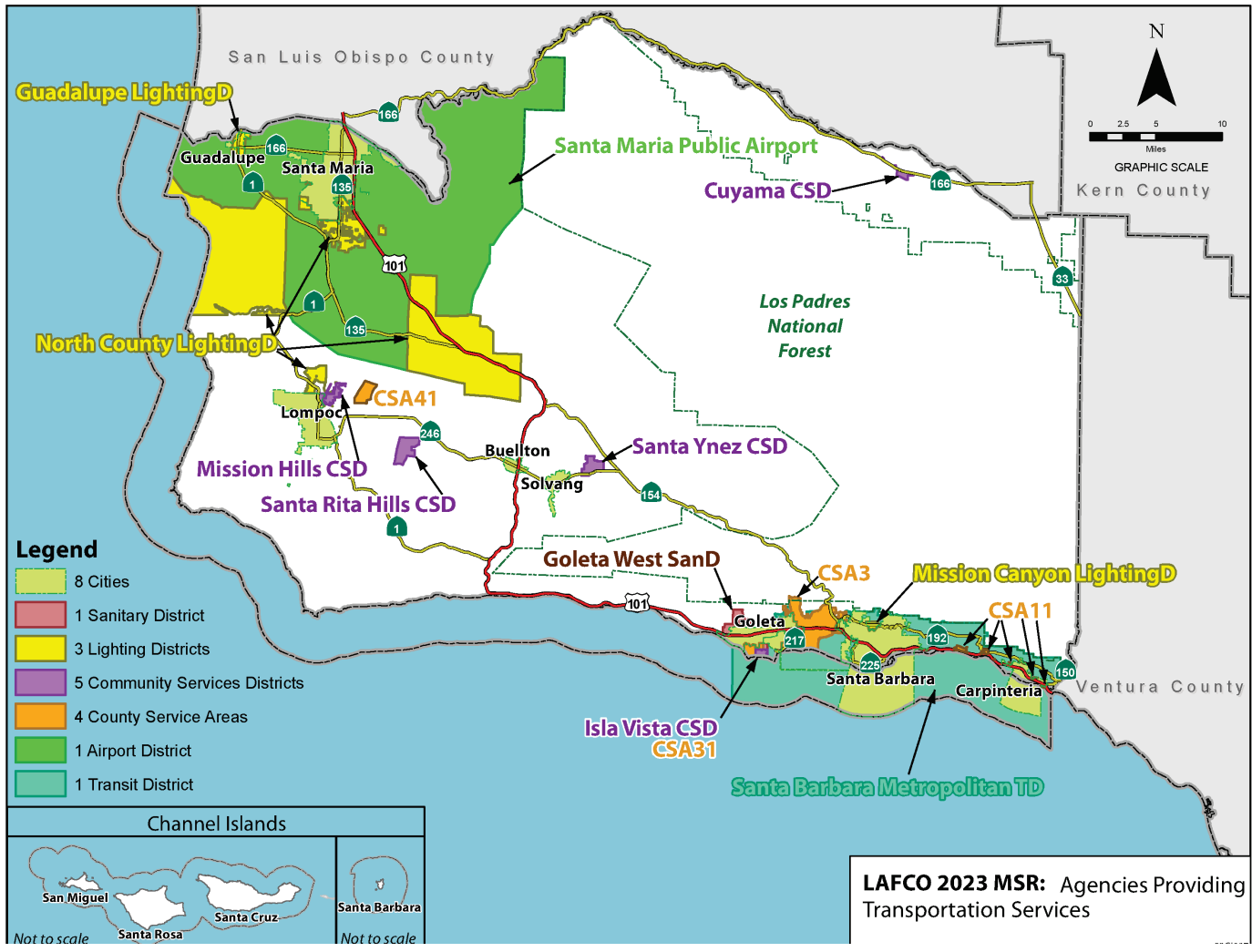
MSR/SOI Update Process

- CKH Act Requires Update of SOI for a jurisdiction every five years
- Sphere is a 20 years planning boundary
- Service Review evaluates 7 factors
- 30-day public review period completed
- Sphere Update/MSR Completed

Action Items	Dates
Compile and Gather Information	Mar - June 2023
Prepare documentation: SOI Update-MSR-CEQA	July - Aug 2023
Admin Draft Review and Comment. 30-day comment period	Aug - Sept 2023
Release for Public Review and Comment. 30-day comment period	Oct 2023
Respond to Comments	Nov 2023
Public Hearing regarding the Service Review/Sphere of Influence Update	Dec 2023 Continued to Jan 2024

Santa Barbara Countywide Sphere
 and Service Review of 23
 Agencies

- Special Districts**
- Goleta West Sanitary District
 - Cuyama Community Services District
 - Isla Vista Community Services District
 - Mission Hills Community Services District
 - Santa Ynez Community Services District
 - Guadalupe Lighting District
 - Mission Canyon Lighting District
 - North County Lighting District
 - County Service Area 3 (Goleta)
 - County Service Area 11 (Summerland & Carpinteria Area)
 - County Service Area 31 (Isla Vista)
 - County Service Area 41 (Rancho Santa Rita)
 - Santa Maria Public Airport District
 - Santa Barbara Metropolitan Transit District
- Cities**
- City of Buellton
 - City of Carpinteria
 - City of Goleta
 - City of Guadalupe
 - City of Lompoc
 - City of Santa Barbara
 - City of Santa Maria
 - City of Solvang



LAFCO 2023 MSR: Agencies Providing Transportation Services

Key Determinations

- Three of the Community Service Districts (Cuyama, Isla Vista, & Santa Rita Hills) have a Sphere of Influence that match their district boundaries. Two of the Lighting Districts (Guadalupe & Mission Canyon) also have Spheres of Influence that match their district boundaries. All four County Service Areas (CSA 3, 11, 31, & 41), Santa Maria Airport, and Santa Barbara Metropolitan Transit District have SOIs that match their district boundaries. (Total of 11 agencies)
- Five Cities have Spheres of Influence that extend beyond their service boundaries: Carpinteria, Lompoc, Santa Barbara, Santa Maria and Solvang.
- The Cities of Buellton, Goleta, and Guadalupe have a coterminous Spheres, however, water and wastewater are provided by another agency for Goleta and Carpinteria.
- All other agencies have a Sphere area outside of its service boundaries. (Total of 3 agencies; Mission Hills CSD, Santa Ynez CSD, & NCLD)
- Sphere expansions are recommended for Santa Ynez CSD, Santa Rita Hills CSD & IVCSA. (Total of 3 agencies)

Key Determinations

- Amending the Spheres of Influence of the Santa Rita Hills Community Services District to include the MOA Road easement area not currently within the boundaries of the agency.
- The area may benefit from local services. It is anticipate future application for service agreements to extend services to the expansion areas will follow.
- Aligns with the 1990 MOA Road that was granted permission to be built along the easement. Connecting the end of Sweeney Road to the District boundary would resolve access to the Lakeview Estates.
- AB 2455 sunsets on January 1, 2035. If the District cannot resolve the issue with roadway access by the time AB 2455 expires, then under Senate Bill 448 (Wieckowski) LAFCO will notify the State Controller's Office to have SRHCSD join the list of inactive districts.

CEQA

- Santa Ynez Community Services District – Study Area 3. *no development is being contemplated and the land use regulations for the area would not be expected to change upon future annexation.*
- Santa Rita Hills Community Services District – Study Area 1. A new permit would need to be issued before construction of the access road is granted with any new CEQA review. *no development is being contemplated and the land use regulations for the area would not be expected to change upon future out-of-agency service agreement.*

Public Outreach

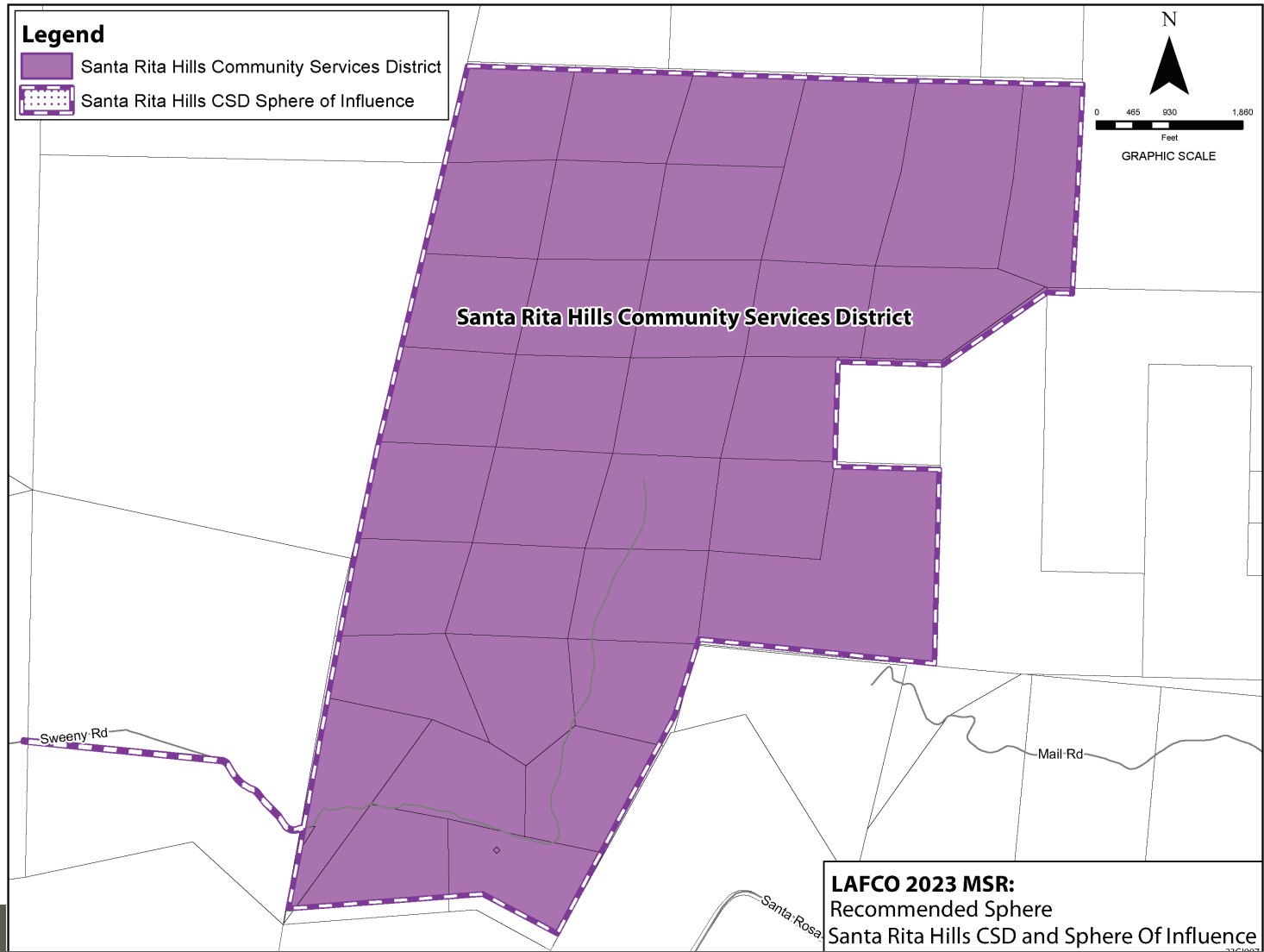
- Regular agenized Commission Updates
- Notified interested parties & advertised in the newspaper
- Available Online: WWW.SBLAFCO.ORG
- Agencies, County & LAFCO Offices

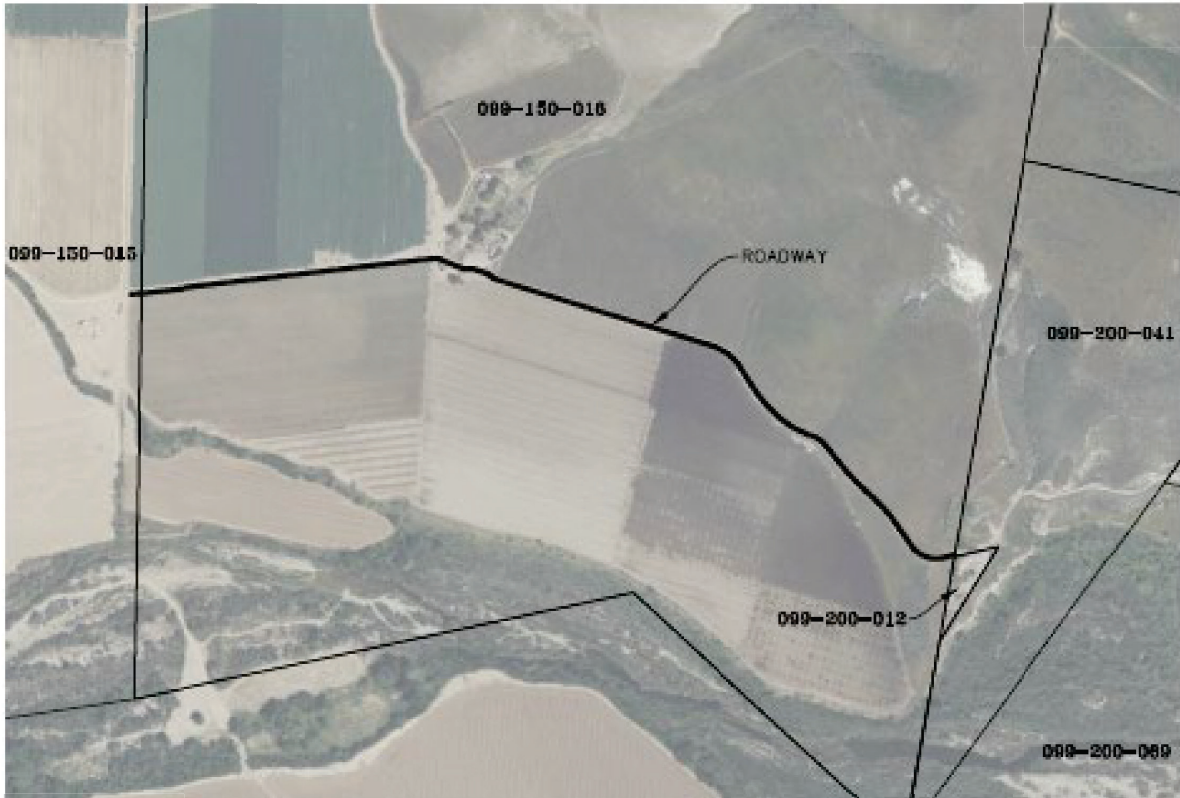
Comments/Changes

- Attachment D includes 4 comments & proposed change table
- Minimal Changes are required, primarily typos and formatting
- One Public Comment Letter from Public Member
- Thank You Everyone for providing input
 - All 23 Agencies
 - County Departments
 - Outside Agencies
 - Public

Recommendation

- Take Public Comments
- Commissioner Questions
- Approve CEQA documentation and determine that the Exemptions are adequate
- Approve the Sphere Update and Service Review





2940 Santa Maria Way, Suite 107, Santa Maria, CA 93455
Phone: (805) 925-2345



1"=500'

**SWEENEY ROAD
ROADWAY IMPROVEMENTS
APN MAP**
LOMPOC, CALIFORNIA
DECEMBER 2023